

Recent Acquisitions

July 1, 2018–June 30, 2019

African Art

Prestige Cloth (Aṣọ-òkè)

Nigeria

Yorùbá

19th century

Hand-spun and imported industrial cotton and silk (*alaari*)

67 11/16 × 42 15/16 in. (172 × 109 cm)

Leonard C. Hanna, Jr., Class of 1913, Fund

2019.53.1



Girdle

South Africa

Zulu

late 19th–early 20th century

Beads and fiber

Square section: 3 1/8 × 5 1/8 × 3/8 in. (7.9 × 13 × 1 cm)

Gift of Ruth Goodale

2019.42.2



Knobkerrie

South Africa

Zulu

late 19th–early 20th century

Wood

H. 28 1/2 × Diam. 2 3/4 in. (72.4 × 7 cm)

Gift of Ruth Goodale

2019.42.7



Necklace

South Africa

Zulu

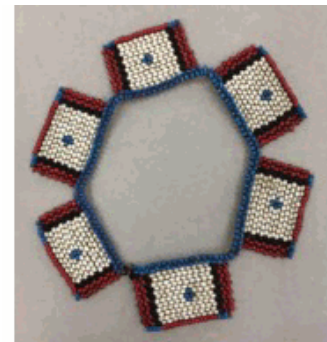
late 19th–early 20th century

Beads and fiber

7 1/2 × 7 × 1/4 in. (19.1 × 17.8 × 0.6 cm)

Gift of Ruth Goodale

2019.42.1



Necklace (Amazipho)

South Africa

Zulu

late 19th–early 20th century

Beads, bone, and fiber

Diam. 6 3/4 in. (17.1 cm)

Gift of Ruth Goodale

2019.42.4



Snuff Container

South Africa

Zulu

late 19th–early 20th century

Gourd, beads, fiber, and a button

H. 8 1/2 × Diam. 3 in. (21.6 × 7.6 cm)

Gift of Ruth Goodale

2019.42.3



Snuff Container

South Africa

Zulu

late 19th–early 20th century

Wood

H. 11 3/4 × Diam. 1 1/2 in. (29.8 × 3.8 cm)

Gift of Ruth Goodale

2019.42.5



Snuff Container

South Africa

Zulu

late 19th–early 20th century

Gourd and wire

H. 2 1/4 × Diam. 3 1/8 in. (5.7 × 7.9 cm)

Gift of Ruth Goodale

2019.42.6



Prestige Hanging (Kpoikpoi)

Sierra Leone

Mende or Vai

early 20th century

Hand-spun cotton strip woven with tapestry and weft brocading

55 × 35 in. (139.7 × 88.9 cm)

Leonard C. Hanna, Jr., Class of 1913, Fund

2018.172.1



Artist: Chief Voania of Muba (Democratic Republic of the Congo, died 1928)

Vessel

Democratic Republic of the Congo, Muba

Kongo, Woyo subgroup

early 20th century

Terracotta

H. 17 7/8 × Diam. 7 3/4 in. (45.5 × 19.7 cm)

Leonard C. Hanna, Jr., Class of 1913, Fund

2019.67.1



Marriage Bed-Screen (Arkilla kerka)

Mali, Niger River Delta, Niafunké

Maabube weavers, Fulbe

ca. 1985

Wool, cotton, and dye

174 × 65 3/4 in. (442 × 167 cm)

Gift of Shoreline Unitarian Universalist Society

2019.41.1



American Decorative Arts

Ceramics

Jar

Made in Puebla, Mexico

1700–1750

Tin-glazed earthenware

H. 10 1/2 × Diam. 8 5/8 in. (26.7 × 21.8 cm)

Friends of American Arts Acquisition Fund

2019.65.1



Furniture

Side Chair

Made in Philadelphia, Pennsylvania

1740–50

Cherry (primary) and maple (seat frame), with reproduction upholstery

42 1/8 × 21 × 19 in. (107 × 53.3 × 48.3 cm)

Gift of Julie and Ted Leisenring, B.A. 1949

2019.22.1



Tea Table

Made in Newport, Rhode Island

1760–90

Mahogany (primary) and birch (block)

H.: 27 × Diam. 30 in. (68.6 × 76.2 cm)

Gift of Stuart J. Holzer in memory of his parents, Ann and Philip Holzer

2019.21.1



Canterbury

Made in New York, or made in Pennsylvania

1800–1810

Bird's-eye maple (primary) and yellow poplar (secondary)

20 1/2 × 18 × 13 1/4 in. (52.1 × 45.7 × 33.7 cm)

Gift of Carol and Stephen A. Ross

2018.146.4



Maker, attributed to: Stephen Badlam (American, 1751–1815)

Possible journeyman: W. H. (American, active 1790–1800)

Card Table

Made in Dorchester, Massachusetts

1790–1800

Mahogany (primary) and pine (secondary)

closed: 29 × 35 7/8 × 17 1/2 in. (73.7 × 91.1 × 44.5 cm)

Gift of Carol and Stephen A. Ross

2018.146.3



Maker: Emery Moulton (American, 1782–1850)

Card Table Made for John Doan

Made in Lynn, Massachusetts

1814

Mahogany (primary) and pine (secondary)

closed: 29 3/4 × 36 × 17 1/2 in. (75.6 × 91.4 × 44.5 cm)

Gift of Carol and Stephen A. Ross

2018.146.2



Maker: Emery Moulton (American, 1782–1850)

Lady's Secretary and Bookcase Made for John Doan

Made in Lynn, Massachusetts

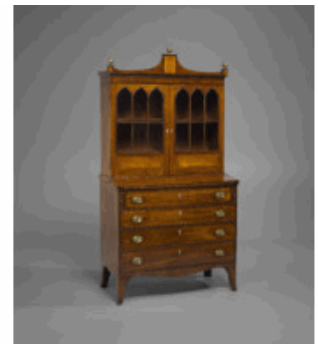
1814

Mahogany (primary), pine (secondary), birch veneer, light- and dark-wood inlays, bone, brass, and glass

79 × 39 3/4 × 21 in. (200.7 × 101 × 53.3 cm)

Gift of Carol and Stephen A. Ross

2018.146.1



Maker: Tommy Simpson (American, born 1939)

Blossoming Grodi

Made in New Milford, Connecticut

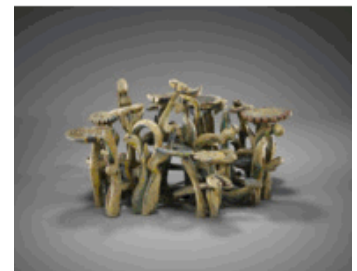
1968

Painted wood

24 × 43 × 32 in. (61 × 109.2 × 81.3 cm)

Friends of American Arts Acquisition Fund

2018.170.1



Glass

Tray

Manufactured in the Midwest, or manufactured in New England

1835–45

Pressed lead glass

1 1/2 × 8 3/8 × 6 3/8 in. (3.8 × 21.3 × 16.2 cm)

Gift of Stephen Parks, B.A. 1961

2018.152.1



Maker: Josh Simpson (American, born 1949)

Maker: Elio Quarisa (Italian, 1936–2010)

White Lattice Saturn

Made in Shelburne Falls, Massachusetts

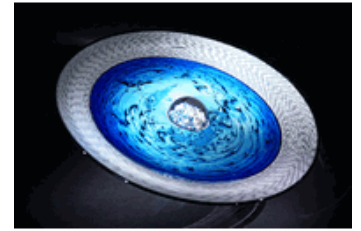
2017

Blown, cut, handworked, and assembled glass

Diam. 16 in. (40.64 cm)

Gift of Stewart G. Rosenblum, J.D. 1974, Ph.D. 2010, in honor of the Yale Law School Class of 1973

2018.138.1



Maker: Thaddeus Wolfe (American, born 1979)

Untitled

Made in Brooklyn, New York

2017–18

Blown and cut glass

10 × 7 × 6 3/4 in. (25.4 × 17.8 × 17.1 cm)

Gift of the artist and R & Company

2019.70.1



Jewelry

Maker: Rachelle Thiewes (American, born 1952)

Shimmer Bracelet

Made in El Paso, Texas

2004

Silver and 18-karat palladium white gold

H. 5 3/8 × Diam. 4 1/4 in. (13.7 × 10.8 cm), 3 oz., 12 dwt. (113 g)

Gift of Rachelle Thiewes and Gallery Loupe

2018.186.1



Lighting Devices

Manufacturer: William F. Shaw (American, 1845–1900)

Pair of Girandoles

Manufactured in Boston, Massachusetts

1849–52

Gilded cast iron with marble and cut lead glass

each 14 1/4 × 6 1/4 × 3 1/4 in. (36.2 × 15.9 × 8.2 cm)

Gift of Stephen Parks, B.A. 1961

2018.152.2.1-2



Metals

Designer: Percy B. Ball (American, born England, 1879–1957)

Manufacturer: R. Wallace & Sons Manufacturing Company (American, 1871–1956)

Compote, "Rhythm" Pattern

Manufactured in Wallingford, Connecticut

1929

Sterling silver

H. 5 1/2 × Diam. 6 1/2 in. (14 × 16.5 cm), 6 oz., 12 dwt. (205 g)

Gift of Jewel Stern in memory of John Mark Hall

2019.68.1



Sculpture

Maker: George Austin Dennison (American, 1873–1966)

Maker: Frank Ingerson (American, 1879–1968)

Table Garniture

Made in Santa Clara, California

1925–30

Enamel on copper with quartz

dimensions variable

Gift of Julie and Ted Leisenring, B.A. 1949

2019.22.2.1-7



Textiles

Maker: Unknown quilter

Pan American Exposition Quilt

Made in United States

probably 1901

Cotton

75 × 75 in. (190.5 × 190.5 cm)

Gift of the Joel and Carole Bernstein Family Collection

2019.27.1



Maker: Unknown quilter

Manufacturer: Textile manufacturer Henry Gardiner (British, 1744–1839)

Apotheosis of George Washington Quilt

Manufactured in Wandsworth, England, made in the United States

1790–1800

Cotton

75 × 75 in. (190.5 × 190.5 cm)

Gift of the Joel and Carole Bernstein Family Collection

2019.27.2



Artist: Mariska Karasz (American, born Hungary, 1898–1960)

Embroidered Picture

Made in Brewster, New York

ca. 1955

Linen, cotton, wool, and metal sequins

framed: 9 1/2 × 14 3/8 in. (24.1 × 36.5 cm)

Gift of Theodore R. Killiam and Lynn Cooley

2019.9.1



Tools and Equipment

Maker: Douglas Donaldson (American, 1882–1972)

Letter Opener

Made in Los Angeles, California

1946

Sterling silver and nephrite

L. 9 3/8 in. (23.8 cm), 2 oz., 2 dwt. (65 g)

Gift of Jacqueline Loewe Fowler

2018.166.2



Designer: Erik Magnussen (Danish, 1884–1961)

Manufacturer: Gorham Manufacturing Company (American, 1865–1967)

Bottle Stopper

Manufactured in Providence, Rhode Island

probably 1928

Sterling silver and cork

4 1/2 × 2 1/8 × 1 3/8 in. (11.4 × 5.4 × 3.5 cm), 5 oz., 13 dwt. (175 g)

Gift of Jacqueline Loewe Fowler

2018.166.1



Wood

Maker: Todd Hoyer (American, born 1952)

Suspended Sphere

Made in Bisbee, Arizona

1994

Alligator juniper

12 × 12 × 12 in. (30.5 × 30.5 × 30.5 cm)

Gift of Kenneth Spitzbard

2018.178.1



Maker: Mark Lindquist (American, born 1949)

Ascending Captive #1

Made in Quincy, Florida

1992

Maple burl

30 × 14 × 9 in. (76.2 × 35.6 × 22.9 cm)

Gift of Deena and Jerry Kaplan

2018.169.2



Maker: Michael James Peterson (American, born 1952)

Coastal Stack IV

Made in Lopez Island, Washington

2008

Carved, sandblasted, and pigmented madrone and locust burl

40 × 20 × 19 in. (101.6 × 50.8 × 48.3 cm)

Gift of Deena and Jerry Kaplan

2018.169.1



Maker: David Pye (British, 1914–1993)

Bowl

Made in Sussex, England

1980

Walnut

2 1/2 × 15 × 8 3/4 in. (6.4 × 38.1 × 22.2 cm)

Gift of The Center for Art in Wood

2018.143.1



American Paintings and Sculpture

Miniatures

Artist: Anthony Meucci (American, born Italy, active 1818–37)

John Bogart Wright (1801–1858)

ca. 1823

Watercolor on ivory with silver mount

2 3/4 × 2 1/4 in. (7 × 5.7 cm)

Gift of James Lancel McElhinney, Yale School of Art, M.F.A. Painting, 1976

2018.132.1



Artist: Clarissa Peters Russell (1809–1854)

Portrait of Five Children

ca. 1845

Watercolor on ivory

4 5/8 × 3 3/8 in. (11.7 × 8.6 cm)

Gift of Amelia J. Zoler, B.S. 1987, M.A. 1987

2018.183.1



Art of the Ancient Americas

Bowl with a Dragon's Head in Profile

Mexico, Puebla, Las Bocas, Olmec

1500–1300 B.C.

Ceramic with traces of cinnabar

H. 2 1/2 × Diam. 3 7/8 in. (6.4 × 9.8 cm)

Gift of Peter David Joralemon, B.A. 1969, M.Phil. 1974

2018.173.9



Fluted Tecomate (Bowl)

Mexico or Guatemala, Olmec

1500–1300 B.C.

Ceramic with white slip

H. 4 1/2 × Diam. 3 3/8 in. (11.4 × 8.6 cm)

Gift of Peter David Joralemon, B.A. 1969, M.Phil. 1974

2018.173.4



Tecomate (Gourd-Shaped Bowl)

Mexico or Guatemala, Olmec

1500–1200 B.C.

Ceramic with pigment

H. 5 1/8 × Diam. 7 1/4 in. (13 × 18.4 cm)

Gift of Peter David Joralemon, B.A. 1969, M.Phil. 1974

2018.173.3



Spouted Dish

Mexico or Guatemala, Olmec

1500–1100 B.C.

Ceramic

1 × 6 × 8 in. (2.5 × 15.2 × 20.3 cm)

Gift of Peter David Joralemon, B.A. 1969, M.Phil. 1974

2018.173.5



Seated Corpulent Figure

Mexico or Guatemala, Olmec

1500–1000 B.C.

Ceramic with pigment

4 × 4 1/2 × 3 1/4 in. (10.2 × 11.4 × 8.3 cm)

Gift of Peter David Joralemon, B.A. 1969, M.Phil. 1974

2018.173.2



Seated Figure

Mexico or Guatemala, Olmec

1500–1000 B.C.

Ceramic with pigment

3 7/8 × 2 3/4 × 2 1/2 in. (9.8 × 7 × 6.4 cm)

Gift of Peter David Joralemon, B.A. 1969, M.Phil. 1974

2018.173.6



Vessel in the Shape of a Human Head with an Eagle Headdress

Mexico or Guatemala, Olmec

1500–1000 B.C.

Ceramic

3 1/2 × 3 7/8 in. (8.9 × 9.8 cm)

Gift of Peter David Joralemon, B.A. 1969, M.Phil. 1974

2018.173.1



Bowl with Dragon's Head in Profile

Mexico or Guatemala, Olmec

1500–900 B.C.

Ceramic with pigment

2 1/2 × 4 5/8 in. (6.4 × 11.7 cm)

Gift of Peter David Joralemon, B.A. 1969, M.Phil. 1974

2018.173.7



215 Andean textiles

Andes, Chancay, Chavín, Chimú, Ica, Inca, Moche, Nazca, Paracas, Sican and Wari cultures

1500 B.C.–A.D. 1533

Camelid fibers, cotton, feathers, fiber, bone, wood, reeds, and pigments
various dimensions

Gift of Erik Jacobsen

2019.1.1-.215



Miniature Mask

Mexico, Gulf Coast, Olmec

1200–400 B.C.

Stone

3 3/4 × 3 1/4 × 2 1/2 in. (9.5 × 8.3 × 6.4 cm)

Gift of Georgia and Michael de Havenon, B.A. 1962

2019.10.1



Celt

Mexico or Guatemala, Olmec

900–400 B.C.

Greenstone

19 × 4 5/8 × 1 1/8 in. (48.3 × 11.7 × 2.9 cm)

Gift of Peter David Joralemon, B.A. 1969, M.Phil. 1974

2018.173.16



Male Figure with a Wig, Collar, and Scepter

Mexico, possibly Veracruz, Arroyo Pesquero, Olmec

900–300 B.C.

Dark brown stone

4 3/8 × 1 1/2 × 1 in. (11.1 × 3.8 × 2.5 cm)

Gift of Peter David Joralemon, B.A. 1969, M.Phil. 1974

2018.173.8



Low Bowl

Central Andes, Chavín culture

900–250 B.C.

Dark green stone with incised decoration

H. 2 3/8 × Diam. 9 1/2 in. (6 × 24.1 cm)

Gift of Peter David Joralemon, B.A. 1969, M.Phil. 1974

2018.173.12



Vessel in the Shape of a Duck

Mexico, Chupícuaro

400 B.C.– A.D. 200

Ceramic

8 × 9 × 11 3/4 in. (20.3 × 22.9 × 29.8 cm)

Gift of Lawrence George, LL.B. 1959, Laura Power, B.A. 1984, Sam George Power, B.A. 2012, and family in honor of Professor Chitoshi Yanaga, 1946–72

2019.23.1



Bowl

Mexico, Michoacán

300 B.C.–A.D. 300

Ceramic with red slip and yellow and blue stucco

H. 4 × Diam. 9 3/8 in. (10.2 × 23.81 cm)

Gift of Peter David Joralemon, B.A. 1969, M.Phil. 1974

2018.173.15



Model of a Ballcourt

Mexico, Guerrero, Mezcala

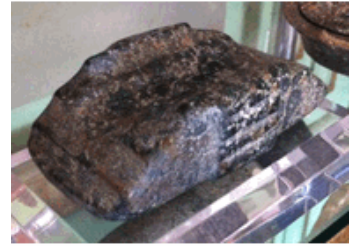
300 B.C.–A.D. 300

Greenstone

7/16 × 7/8 × 1 5/8 in. (1.1 × 2.3 × 4.1 cm)

Gift of Peter David Joralemon, B.A. 1969, M.Phil. 1974

2018.173.11



Snuff Tablet

Central Andes, probably Bolivia, Tiwanaku

A.D. 400–1000

Slate

6 1/8 × 1 1/2 × 2 3/4 in. (15.6 × 3.8 × 7 cm)

Gift of Georgia and Michael de Havenon, B.A. 1962

2019.10.3



Codex-Style Cylinder Vase

Mexico or Guatemala, Maya

A.D. 600–900

Ceramic with pigment

H. 3 3/4 × Diam. 4 3/8 in. (9.5 × 11.1 cm)

Gift of Peter David Joralemon, B.A. 1969, M.Phil. 1974

2018.173.17



Vessel with a Battle Scene

Mexico or Guatemala, Maya

A.D. 600–900

Mold-pressed ceramic

H. 6 1/16 × Diam. 5 1/4 in. (15.4 × 13.3 cm)

Gift of Peter David Joralemon, B.A. 1969, M.Phil. 1974

2018.173.14



Tunic Fragment

Andes, Southern Highlands, Wari

A.D. 600–1000

Cotton and natural dye

42 1/2 × 39 in. (108 × 99.1 cm)

Gift of Georgia and Michael de Havenon, B.A. 1962

2019.10.2



Cruciform Bowl

Central Andes, Inca

A.D. 1100–1550

Red stone

2 3/8 × 8 11/16 × 12 5/8 in. (6 × 22 × 32 cm)

Gift of Peter David Joralemon, B.A. 1969, M.Phil. 1974

2018.173.13



Model of a Temple

Mexico, possibly Aztec

A.D. 1250–1521

Volcanic stone

10 1/4 × 9 7/16 × 11 5/8 in. (26 × 24 × 29.5 cm)

Gift of Peter David Joralemon, B.A. 1969, M.Phil. 1974

2018.173.10



Asian Art

Burma

Buddha

Burma

11th–12th century

Gilt bronze

5 1/8 × 3 1/4 × 2 1/8 in. (13 × 8.3 × 5.4 cm)

Gift of Evelyn Kranes Kossak

2019.31.1



Central Asia

Hanging for Sides of a Camel in a Bridal Procession (Asmalyk)

Central Asia

late 19th century

Wool with silk embroidery; backing: printed cotton (Russian trade cloth)

35 × 48 in. (88.9 × 121.9 cm)

Gift of Sarah B. Sherrill in memory of her grandfather Charles H. Sherrill, B.A.

1889, and father, Gibbs W. Sherrill, B.A. 1931

2018.167.3



China

Five-Lobed Dish

China

11th century

Black lacquer

H. 7/8 × Diam. 6 in. (2.2 × 15.2 cm)

Robert Hatfield Ellsworth Fund

2018.171.1



Bodhisattva Avalokiteshvara (Guanyin)

China

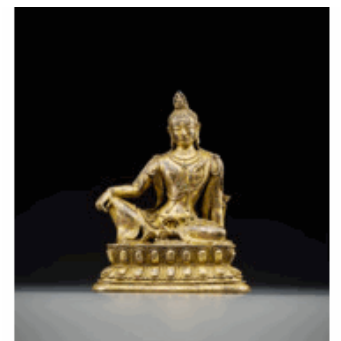
late 17th–early 18th century

Gilt bronze

6 1/4 × 5 × 3 5/8 in. (15.9 × 12.7 × 9.2 cm)

Robert Hatfield Ellsworth Fund

2019.66.1



Buddhist Pouring Vessel (Kundika)

China

18th century

Cloisonné; enamel on copper

H. 10 3/4 × Diam. 5 in. (27.3 × 12.7 cm)

Gift of Brian M. Salzberg, B.S. 1963

2018.161.1



Scholar's Rock

China

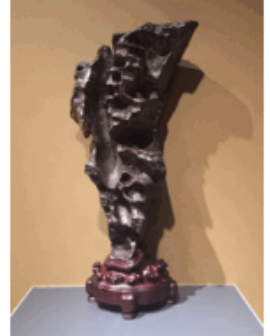
20th century

Baiying stone

33 1/16 × 15 15/16 × 7 1/2 in. (84 × 40.5 × 19 cm)

Gift of Hu Kemin

2019.44.1



India

Tile with Ascetics, Figures on Balconies, and Ducks

India, Kashmir, Harwan

5th–6th century C.E.

Terracotta

21 1/8 × 11 15/16 × 2 3/8 in. (53.6 × 30.3 × 6 cm)

Gift of Evelyn Kranes Kossak

2019.43.1



Indonesia

Durga Slaying the Demon Mahisha (Durga as Mahishasuramardini)

Indonesia, Java

late 9th century C.E.

Volcanic stone

40 5/8 × 17 1/2 × 6 1/2 in. (103.2 × 44.5 × 16.5 cm)

Gift of Ann and Gilbert H. Kinney, B.A. 1953, M.A. 1954

2018.168.1



Deification Statue in the Shape of the Goddess Parvati

Indonesia, Java

13th–14th century

Stone

46 × 14 × 14 in. (116.8 × 35.6 × 35.6 cm)

Gift of Ann and Gilbert H. Kinney, B.A. 1953, M.A. 1954

2018.168.2



Iran

Kilim

Iran

second half 19th century

Slit-weave tapestry; wool

48 1/2 × 40 in. (123.2 × 101.6 cm)

Gift of Sarah B. Sherrill in memory of her grandfather Charles H. Sherrill, B.A.

1889, and father, Gibbs W. Sherrill, B.A. 1931

2018.167.2



Japan

Cherry Blossoms at Mount Yoshino

Japan

ca. 1600

Six-panel folding screen; color on paper with gold leaf

58 11/16 × 125 1/8 in. (149 × 317.8 cm)

Gift of Rosemarie and Leighton R. Longhi, B.A. 1967

2018.179.3



Fragment of a Robe Mounted as a Hanging Scroll

Japan

18th century

Hanging scroll; yūzen-dyed silk and metallic thread, with applique and embroidery

29 1/8 × 10 1/2 in. (73.9 × 26.7 cm)

Gift of Rosemarie and Leighton R. Longhi, B.A. 1967

2018.179.13



Artist: Fūgai Ekun (Japanese, 1568–1654)
Hotei Resting on His Worldly Possessions
Japan
late 16th–early 17th century
Hanging scroll; ink on paper
30 15/16 × 10 1/4 in. (78.6 × 26 cm)
Gift of Rosemarie and Leighton R. Longhi, B.A. 1967
2018.179.5



Artist: Mochizuki Gyokkei (Japanese, 1785–1857)
Swallows by a Waterfall
Japan
1851
Hanging scroll; ink and color on silk
80 × 33 1/4 in. (203.2 × 84.5 cm)
Gift of Rosemarie and Leighton R. Longhi, B.A. 1967
2018.179.6



Artist: Hakuin Ekaku (Japanese, 1685–1768)
Hotei Juggling a Saucer
Japan
18th century
Hanging scroll; ink on paper
50 × 11 1/4 in. (127 × 28.6 cm)
Gift of Rosemarie and Leighton R. Longhi, B.A. 1967
2018.179.9



Artist: Hashimoto Gahō (Japanese, 1835–1908)
Mount Hōrai
Japan
Winter 1898
Hanging scroll; ink and color on silk
56 5/16 × 27 9/16 in. (143 × 70 cm)
Gift of Rosemarie and Leighton R. Longhi, B.A. 1967
2018.179.14



Artist: Hosoda Eishi (Japanese, 1756–1829)
New Year's Activities at Yoshiwara
Japan
late 18th–early 19th century
Pair of hanging scrolls; ink and color on paper
each 8 3/4 × 10 3/4 in. (22.3 × 27.3 cm)
Gift of Rosemarie and Leighton R. Longhi, B.A. 1967
2018.179.12.1-2



Artist: Itō Jakuchū (Japanese, 1716–1800)

Puppy and Broom

Japan

18th century

Hanging scroll; ink on paper

44 × 17 3/16 in. (111.8 × 43.7 cm)

Gift of Rosemarie and Leighton R. Longhi, B.A. 1967

2018.179.8



Artist: Yukiya Izumita (Japanese, born 1966)

Sekisoh Layers

Japan

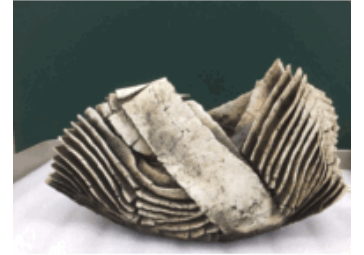
2018

Stoneware with grog

12 1/4 × 20 1/2 × 8 1/2 in. (31.1 × 52.1 × 21.6 cm)

Purchased with a gift from the B. D. G. Leviton Foundation in honor of Sadako Ohki

2018.153.1



Artist: Kano School (Japanese)

Birds and Flowering Plants with Poem Slips

Japan

18th century

Six-panel folding screen; ink and color on paper with gold leaf

58 7/16 × 140 3/8 in. (148.5 × 356.6 cm)

Gift of Rosemarie and Leighton R. Longhi, B.A. 1967

2018.179.1



Artist: Matsumura Goshun (Japanese, 1752–1811)

Flying Squirrel and Japanese Cedar (Musasabi)

Japan

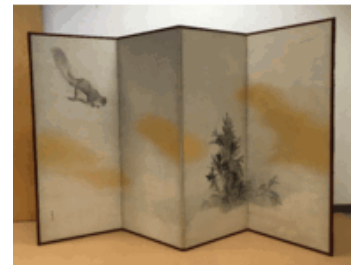
late 18th–early 19th century

Four-panel folding screen; ink on paper

66 1/8 × 108 7/16 in. (168 × 275.5 cm)

Gift of Rosemarie and Leighton R. Longhi, B.A. 1967

2018.179.4



Artist: Nagasawa Rosetsu (Japanese, 1754–1799)

Calligrapher: Shibano Ritsuzan (Japanese, 1736–1807)

Drummer

Japan

18th century

Hanging scroll; ink and color on paper, with ivory knobs

52 3/8 × 11 5/8 in. (133 × 29.5 cm)

Gift of Rosemarie and Leighton R. Longhi, B.A. 1967

2018.179.11



Artist: Nakamura Hōchū (Japanese, active late 18th century, died 1819)

Tortoises

Japan

late 18th–early 19th century

Hanging scroll; ink on paper

39 13/16 × 10 13/16 in. (101.2 × 27.4 cm)

Gift of Rosemarie and Leighton R. Longhi, B.A. 1967

2018.179.7



Artist: Rinpa School (Japanese)

Chrysanthemums

Japan

ca. 1650

Eight-panel folding screen; color and gofun on paper with gold leaf

59 15/16 × 187 15/16 in. (152.2 × 477.3 cm)

Gift of Rosemarie and Leighton R. Longhi, B.A. 1967

2018.179.2



Artist: Tsuji Kakō (Japanese, 1870–1931)

Fresh Wind in the Old Park

Japan

early 20th century

Hanging scroll; ink and color on silk, with ivory rollers

50 13/16 × 19 11/16 in. (129 × 50 cm)

Gift of Rosemarie and Leighton R. Longhi, B.A. 1967

2018.179.10



Korea

Ten Symbols of Longevity

Korea

19th century

Ten-panel folding screen; ink and color on paper

66 1/2 × 148 × 1/2 in. (168.9 × 375.9 × 1.3 cm)

Gift of Garth Hall, Ph.D. 1985, and Hedy Adari Hall, Ph.D. 1987

2019.61.1



Morocco

Rug

Morocco

mid-20th century

Pile weave; wool

59 × 39 1/2 in. (149.9 × 100.3 cm)

Gift of Sarah B. Sherrill in memory of her grandfather Charles H. Sherrill, B.A.

1889, and father, Gibbs W. Sherrill, B.A. 1931

2018.167.7



Saudi Arabia

Animal Cover with Striped Design

Saudi Arabia

mid-20th century

Wool

70 1/4 × 28 in. (178.4 × 71.1 cm)

Gift of Sarah B. Sherrill in memory of her grandfather Charles H. Sherrill, B.A.

1889, and father, Gibbs W. Sherrill, B.A. 1931

2018.167.10



Tunisia

Head Covering or Sash

Tunisia

late 19th century

Wool

76 × 35 1/2 in. (193 × 90.2 cm)

Gift of Sarah B. Sherrill in memory of her grandfather Charles H. Sherrill, B.A.

1889, and father, Gibbs W. Sherrill, B.A. 1931

2018.167.5



Shawl or Blanket (Handira)

Tunisia

late 19th century

Wool

45 1/2 × 46 in. (115.6 × 116.8 cm)

Gift of Sarah B. Sherrill in memory of her grandfather Charles H. Sherrill, B.A.

1889, and father, Gibbs W. Sherrill, B.A. 1931

2018.167.4



Head Covering or Sash

Tunisia

mid-20th century

Wool with resist dye

88 × 13 in. (223.5 × 33 cm)

Gift of Sarah B. Sherrill in memory of her grandfather Charles H. Sherrill, B.A.

1889, and father, Gibbs W. Sherrill, B.A. 1931

2018.167.6



Turkey

Grain Bag with Geometric Pattern

Turkey

early 20th century

Slit-weave tapestry and weft-faced plain weave; wool

31 1/2 × 25 1/2 in. (80 × 64.8 cm)

Gift of Sarah B. Sherrill in memory of her grandfather Charles H. Sherrill, B.A.

1889, and father, Gibbs W. Sherrill, B.A. 1931

2018.167.1



Purse

Turkey

mid-20th century

Slit-weave tapestry; wool

10 1/2 × 8 in. (26.7 × 20.3 cm)

Gift of Sarah B. Sherrill in memory of her grandfather Charles H. Sherrill, B.A.

1889, and father, Gibbs W. Sherrill, B.A. 1931

2018.167.9



Turkmenistan

Purse

Turkmenistan

19th century

Pile weave; wool

7 1/2 × 7 1/2 in. (19.1 × 19.1 cm)

Gift of Sarah B. Sherrill in memory of her grandfather Charles H. Sherrill, B.A.

1889, and father, Gibbs W. Sherrill, B.A. 1931

2018.167.8



Vietnam

Ewer with Vegetal Design

Vietnam

13th–14th century

Stoneware with incised decoration under green glaze

H. 6 3/4 × Diam. 7 in. (17.1 × 17.8 cm)

Gift of Brian M. Salzberg, B.S. 1963

2018.140.1



European Art

Paintings

Artist: Orsola Maddalena Caccia (Italian, 1596–1676)

Vases of Flowers on a Table

ca. 1625

Oil on canvas

37 3/4 × 64 3/8 in. (95.9 × 163.5 cm)

Leonard C. Hanna, Jr., Class of 1913, Fund

2018.157.1



Artist: Giovanni Battista Cipriani (Italian, 1727–1785)

Allegory of Roman London

ca. 1760

Oil on canvas

15 1/4 × 19 in. (38.8 × 48.3 cm)

Bequest of Richard Stuart Teitz, B.A. 1963

2019.2.21

Artist: Guercino (Giovanni Francesco Barbieri) (Italian, 1591–1666)

Saint John the Baptist in the Wilderness

1652

Oil on canvas

69 15/16 × 91 1/4 in. (177.7 × 231.8 cm)

Leonard C. Hanna, Jr., Class of 1913, Fund

2019.57.1



Artist: Guido Reni (Italian, Bologna, 1575–1642)

Orpheus and Eurydice

1596–97

Oil on canvas

84 1/2 × 65 9/16 in. (214.6 × 166.5 cm)

Maitland F. Griggs, B.A. 1896, Fund, Robert Lehman Foundation Acquisition Fund for Early European and Modern and Contemporary Art, and Director's Fund, by exchange

2019.29.1



Sculpture

Artist: Vincenzo Danti (Italian, Perugia, 1530–1576)

Portrait of Benedetto Egio

ca. 1570–75

Marble

19 1/8 × 18 1/2 × 11 in. (48.5 × 47 × 27.9 cm)

Leonard C. Hanna, Jr., Class of 1913, Fund

2019.11.1



Indo-Pacific Art

Malaysia

Ikat Tying Frame with a Textile

Iban

Malaysia, Borneo, Sarawak, Balau

late 19th–early 20th century

Wood with cotton and natural dyes

79 15/16 × 14 3/4 × 2 3/8 in. (203 × 37.5 × 6 cm)

Gift of Dr. Traude Gavin

2019.55.3



Ritual Textile (Pua Kumbu)

Iban

Malaysia, Borneo, Sarawak, Sri Aman, Balau, Lingga

late 19th–early 20th century

Warp ikat; cotton with natural and synthetic dyes

82 11/16 × 38 3/16 in. (210 × 97 cm)

Gift of Dr. Traude Gavin

2019.55.1



Weaving Shuttle

Iban

Malaysia, Borneo, Sarawak, Balau

late 19th–early 20th century

Wood

1 3/4 × 1 × 25 in. (4.5 × 2.5 × 63.5 cm)

Gift of Dr. Traude Gavin

2019.55.2



Myanmar

Woman's Blanket (Vai Puan or Puandum)

Chin

Myanmar, Zahau

late 19th to mid-20th century

Discontinuous one-faced supplementary-weft patterning; hand-spun cotton

64 9/16 × 44 1/2 in. (164 × 113 cm)

Gift of Barbara G. Fraser and David W. Fraser

2019.46.3



Woman's Skirt

Chin

Myanmar, Zanniat

late 19th to mid-20th century

Cotton

50 1/2 × 31 1/2 in. (128.3 × 80 cm)

Gift of Barbara G. Fraser and David W. Fraser

2019.46.1



Woman's Skirt

Chin

Myanmar, Haka

late 19th to mid-20th century

One-faced complementary-weft patterning and two-faced supplementary-weft patterning; silk and cotton

38 × 49 7/16 in. (96.5 × 125.5 cm)

Gift of Barbara G. Fraser and David W. Fraser

2019.46.30



Man's Blanket (Cong-nak Puan)

Chin, Zotung

Myanmar, Matupi township, Hre Ywe village

ca. 1900

Two-faced supplementary-weft patterning and twill; silk

80 11/16 × 50 3/8 in. (205 × 128 cm)

Gift of Barbara G. Fraser and David W. Fraser

2019.46.15



Man's Loincloth (Biar Pi)

Chin

Myanmar

ca. 1900

Two-faced supplementary-weft patterning and weft-faced plain weave; hand-spun cotton and silk

292 15/16 × 15 3/8 in. (744 × 39 cm)

Gift of Barbara G. Fraser and David W. Fraser

2019.46.6



Man's Blanket (Can-lo Puan)

Chin

Myanmar, Mara

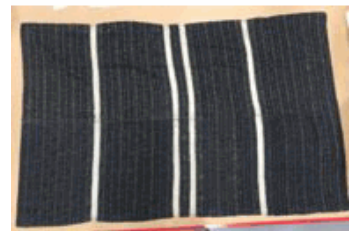
ca. 1904

Two-faced supplementary-weft patterning and weft-faced plain weave; hand-spun cotton

45 1/4 × 74 in. (115 × 188 cm)

Gift of Barbara G. Fraser and David W. Fraser

2019.46.41



Man's Blanket

Chin

Myanmar, Mara

early 20th century

Two-faced supplementary-weft patterning and twill; hand-spun cotton

40 3/16 × 54 5/16 in. (102 × 138 cm)

Gift of Barbara G. Fraser and David W. Fraser

2019.46.45



Man's Loincloth

Chin, Laitu

Myanmar, Magwe division, Ngaphe Township

early 20th century

Hand-spun cotton

38 3/16 × 79 1/8 in. (97 × 201 cm)

Gift of Barbara G. Fraser and David W. Fraser

2019.46.20



Man's Loincloth

Chin

Myanmar, Mara

early 20th century

Twill and weft-faced plain weave; cotton

192 1/8 × 9 13/16 in. (488 × 25 cm)

Gift of Barbara G. Fraser and David W. Fraser

2019.46.24



Man's Loincloth (Patari)

Chin

Myanmar, Khami

early 20th century

One-faced supplementary-weft patterning with false embroidery; cotton and silk

179 1/2 × 5 7/8 in. (456 × 15 cm)

Gift of Barbara G. Fraser and David W. Fraser

2019.46.12



Woman's Blanket (Hnem Rang)

Chin

Myanmar, Zahau

early 20th century

Two-faced supplementary-weft patterning and weft-faced plain weave; cotton

42 1/2 × 55 1/8 in. (108 × 140 cm)

Gift of Barbara G. Fraser and David W. Fraser

2019.46.29



Woman's Blanket (Hnem Rang)

Chin

Myanmar, Zahau

early 20th century

Weft-faced plain weave; hand-spun cotton

72 1/16 × 45 11/16 in. (183 × 116 cm)

Gift of Barbara G. Fraser and David W. Fraser

2019.46.32



Woman's Breast Cloth

Chin

Myanmar, Khumi, Sami village

early 20th century

One-faced supplementary-weft patterning with false embroidery; cotton with glass beads

29 15/16 × 9 13/16 in. (76 × 25 cm)

Gift of Barbara G. Fraser and David W. Fraser

2019.46.46



Woman's Hanging Panel

Chin

Myanmar, Lauktu

early 20th century

Cotton

16 15/16 × 19 5/16 in. (43 × 49 cm)

Gift of Barbara G. Fraser and David W. Fraser

2019.46.34



Woman's Head Wrapper (Tanpoke Lai)

Chin

Myanmar, Lauktu, Ann township

early 20th century

Two-faced and one-faced supplementary-weft patterning; silk and cotton

18 1/2 × 59 7/16 in. (47 × 151 cm)

Gift of Barbara G. Fraser and David W. Fraser

2019.46.33



Woman's Skirt

Chin

Myanmar, Kaung Su

early 20th century

One-faced supplementary-weft patterning with false embroidery; cotton and silk

36 1/4 × 14 15/16 in. (92 × 38 cm)

Gift of Barbara G. Fraser and David W. Fraser

2019.46.22



Woman's Skirt

Chin

Myanmar, Ngawn

early 20th century

Possibly two-faced supplementary-weft patterning; cotton

27 3/4 × 53 3/4 in. (70.5 × 136.5 cm)

Gift of Barbara G. Fraser and David W. Fraser

2019.46.49



Woman's Skirt

Chin

Myanmar, Ngawn

early 20th century

Two-faced supplementary-weft patterning and weft-faced plain weave; cotton

27 3/16 × 51 3/4 in. (69 × 131.5 cm)

Gift of Barbara G. Fraser and David W. Fraser

2019.46.50



Woman's Skirt (Hni Tial)

Chin

Myanmar, Haka

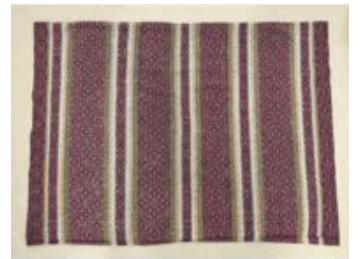
early 20th century

Two-faced supplementary-weft patterning; silk and cotton

29 1/2 × 39 3/8 in. (75 × 100 cm)

Gift of Barbara G. Fraser and David W. Fraser

2019.46.28



Woman's Skirt (Tampouk)

Chin, Utbu

Myanmar, Sedouttaya

early 20th century

Cotton and silk

74 7/16 × 32 11/16 in. (189 × 83 cm)

Gift of Barbara G. Fraser and David W. Fraser

2019.46.38



Woman's Tunic (Kor)

Chin

Myanmar, Zahau

early 20th century

Two-faced supplementary-weft patterning and twill with weft-faced plain weave;

cotton and silk

16 1/8 × 17 5/16 in. (41 × 44 cm)

Gift of Barbara G. Fraser and David W. Fraser

2019.46.40



Woman's Tunic (Kor)

Chin

Myanmar, Haka

early 20th century

Two-faced supplementary-weft patterning, twill, and weft-faced plain weave; silk
14 3/16 × 21 1/4 in. (36 × 54 cm)

Gift of Barbara G. Fraser and David W. Fraser

2019.46.43



Woman's Wrap Skirt (Hmar Am)

Chin

Myanmar, Mizo

early 20th century

Two-faced supplementary-weft patterning; hand-spun cotton
43 11/16 × 18 1/8 in. (111 × 46 cm)

Gift of Barbara G. Fraser and David W. Fraser

2019.46.48



Woman's Breast Cloth

Chin

Myanmar, Kaung Su

early 20th to mid-20th century

One-faced supplementary-weft patterning; cotton with glass beads
30 5/16 × 11 7/16 in. (77 × 29 cm)

Gift of Barbara G. Fraser and David W. Fraser

2019.46.23



Woman's Tunic

Chin

Myanmar, Lauktu

1910–20

One-faced supplementary-weft patterning; cotton and silk
28 3/8 × 44 1/8 in. (72 × 112 cm)

Gift of Barbara G. Fraser and David W. Fraser

2019.46.21



Woman's Tunic (Phyang)

Chin

Myanmar, Khamau

ca. 1923

One-faced supplementary- and complementary-weft patterning; silk and cotton
43 5/16 × 37 13/16 in. (110 × 96 cm)

Gift of Barbara G. Fraser and David W. Fraser

2019.46.31



Man's Blanket (Khang Tha Zih)

Chin

Myanmar, N'Men, Ma Kyaing village

ca. 1930

Hand-spun cotton

66 9/16 × 43 5/16 in. (169 × 110 cm)

Gift of Barbara G. Fraser and David W. Fraser

2019.46.19



Woman's Shoulder Cloth (Hti Paun)

Chin

Myanmar, Arang

ca. 1930

One-faced supplementary-weft patterning; hand-spun cotton

74 7/16 × 16 1/8 in. (189 × 41 cm)

Gift of Barbara G. Fraser and David W. Fraser

2019.46.9



Blanket (Zawl Puan)

Chin

Myanmar, Mizo

mid-20th century

Twill; cotton

67 5/16 × 50 13/16 in. (171 × 129 cm)

Gift of Barbara G. Fraser and David W. Fraser

2019.46.39



Breast Cloth (Nekok)

Chin

Myanmar, Khumi

mid-20th century

One-faced supplementary-weft patterning with false embroidery; cotton with sequins, glass beads, and seeds

37 3/8 × 6 5/16 in. (95 × 16 cm)

Gift of Barbara G. Fraser and David W. Fraser

2019.46.7



Family Blanket (Puan Rang)

Chin

Myanmar, Kanpelet, Dai

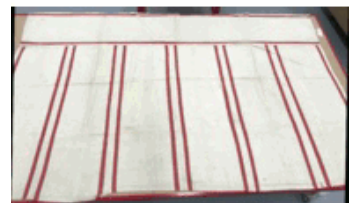
mid-20th century

Cotton

59 13/16 × 92 1/8 in. (152 × 234 cm)

Gift of Barbara G. Fraser and David W. Fraser

2019.46.27



Man's Sitting Cloth (Pum Hru)

Chin

Myanmar, N'Men

mid-20th century

Woven cotton with three-strand braided straps

30 5/16 × 16 9/16 in. (77 × 42 cm)

Gift of Barbara G. Fraser and David W. Fraser

2019.46.13



Mantle (Cong-nak Puan)

Chin

Myanmar, Falam

mid-20th century

One-faced supplementary-weft patterning and twill; cotton

77 3/16 × 46 7/16 in. (196 × 118 cm)

Gift of Barbara G. Fraser and David W. Fraser

2019.46.2



Tunic

Chin

Myanmar, Laytu

mid-20th century

One-faced and two-faced supplementary-weft patterning with false embroidery; cotton and silk with beads

16 1/2 × 16 1/2 in. (41.9 × 41.9 cm)

Gift of Barbara G. Fraser and David W. Fraser

2019.46.42



Woman's Blanket (Puan Laisen)

Chin

Myanmar, Mizo

mid-20th century

Two-faced supplementary-weft patterning, tapestry weave, and weft-faced plain weave; hand-spun cotton

68 1/8 × 43 5/16 in. (173 × 110 cm)

Gift of Barbara G. Fraser and David W. Fraser

2019.46.8



Woman's Blanket (Tawnok)

Chin

Myanmar, Tiddim

mid-20th century

One-faced supplementary-weft patterning and twill with false embroidery; cotton and silk

74 13/16 × 41 3/4 in. (190 × 106 cm)

Gift of Barbara G. Fraser and David W. Fraser

2019.46.10



Woman's Blanket (Tawnok)

Chin

Myanmar, Tiddim

mid-20th century

One-faced supplementary-weft patterning, twill, and macramé; cotton or silk

44 7/8 × 78 3/8 in. (114 × 199 cm)

Gift of Barbara G. Fraser and David W. Fraser

2019.46.47



Woman's Breast Cloth

Chin

Myanmar, Khami

mid-20th century

One-faced supplementary-weft patterning with false embroidery; cotton with glass beads

29 1/2 × 14 3/16 in. (75 × 36 cm)

Gift of Barbara G. Fraser and David W. Fraser

2019.46.14



Woman's Breast Cloth

Chin

Myanmar, Khami

mid-20th century

Two-faced and one-faced supplementary-weft patterning with false embroidery; cotton

26 × 13 in. (66 × 33 cm)

Gift of Barbara G. Fraser and David W. Fraser

2019.46.35



Woman's Breast Cloth

Chin

Myanmar, Mro Arang

mid-20th century

One-faced supplementary-weft patterning with false embroidery; cotton with glass beads

27 9/16 × 11 13/16 in. (70 × 30 cm)

Gift of Barbara G. Fraser and David W. Fraser

2019.46.44



Woman's Breast Cloth

Chin

Myanmar, Khami

mid-20th century

One-faced supplementary-weft patterning with false embroidery; cotton

29 15/16 × 14 15/16 in. (76 × 38 cm)

Gift of Barbara G. Fraser and David W. Fraser

2019.46.51



Woman's Hanging Panel (Hondiat)

Chin

Myanmar, Laytu

mid-20th century

Two-faced and one-faced supplementary-weft patterning with false embroidery; cotton and silk

19 11/16 × 19 11/16 in. (50 × 50 cm)

Gift of Barbara G. Fraser and David W. Fraser

2019.46.17



Woman's Shawl

Chin

Myanmar, Matu

mid-20th century

Hand-spun cotton

89 × 22 1/16 in. (226 × 56 cm)

Gift of Barbara G. Fraser and David W. Fraser

2019.46.37



Woman's Skirt

Chin

Myanmar, Khumi

mid-20th century

One-faced supplementary-weft patterning; cotton with glass beads and seeds

38 3/16 × 18 1/8 in. (97 × 46 cm)

Gift of Barbara G. Fraser and David W. Fraser

2019.46.52



Woman's Skirt (Kengkrang)

Chin

Myanmar, Sunghtu

mid-20th century

One-faced supplementary- and complementary-weft patterning; cotton

34 1/4 × 35 13/16 in. (87 × 91 cm)

Gift of Barbara G. Fraser and David W. Fraser

2019.46.5



Woman's Skirt (Wan Klai)

Chin

Myanmar, Southern Taung Mro

mid-20th century

One-faced supplementary-weft patterning with false embroidery; cotton

26 × 18 1/8 in. (66 × 46 cm)

Gift of Barbara G. Fraser and David W. Fraser

2019.46.25



Woman's Skirt (Wan Klai)

Chin

Myanmar, Northern Taung Mro

mid-20th century

One-faced supplementary-weft patterning with embroidery; cotton

28 3/8 × 10 5/8 in. (72 × 27 cm)

Gift of Barbara G. Fraser and David W. Fraser

2019.46.26



Woman's Tubular Skirt

Chin

Myanmar, Matu

mid-20th century

Hand-spun cotton

27 3/16 × 16 1/8 in. (69 × 41 cm)

Gift of Barbara G. Fraser and David W. Fraser

2019.46.36



Woman's Tunic

Chin

Myanmar, Khamau

mid-20th century

One-faced supplementary-weft patterning and twill with embroidery; cotton

45 11/16 × 36 1/4 in. (116 × 92 cm)

Gift of Barbara G. Fraser and David W. Fraser

2019.46.11



Woman's Skirt (Thi Hni)

Chin

Myanmar, Zahau

ca. 1955

One-faced supplementary-weft patterning; cotton and silk or mercerized cotton

with miim seeds, brass tubes, and green beads

80 11/16 × 50 3/8 in. (205 × 128 cm)

Gift of Barbara G. Fraser and David W. Fraser

2019.46.16



Artist: Daw Ye Kwei (Myanmar)

Woman's Tube Skirt (Khung Zo)

ca. 1968

Two-faced supplementary-weft patterning; cotton and silk or mercerized cotton

37 13/16 × 28 3/8 in. (96 × 72 cm)

Gift of Barbara G. Fraser and David W. Fraser

2019.46.18



Tunic (Phang)

Chin

Myanmar, Dai

late 20th century

One-faced supplementary-weft patterning; cotton

29 15/16 × 25 9/16 in. (76 × 65 cm)

Gift of Barbara G. Fraser and David W. Fraser

2019.46.4



Papua New Guinea

Dance Paddle

Trobriand Islands

Papua New Guinea, Trobriand Islands, Massim

19th century

Wood with pigment

25 3/16 × 9 5/8 × 13/16 in. (64 × 24.5 × 2 cm)

Gift of the Rubin-Ladd Foundation

2019.24.1



Dance Paddle

Trobriand Islands

Papua New Guinea, Trobriand Islands, Massim

19th century

Wood with pigment

27 3/4 × 9 1/2 × 1 in. (70.5 × 24.1 × 2.5 cm)

Gift of the Rubin-Ladd Foundation

2019.24.2



Modern and Contemporary Art

Baskets

Artist: Shan Goshorn (Eastern Band of Cherokee, 1957–2018)

Our Lands Are Not Lines on Paper

2012

Arches watercolor paper splints with archival ink and acrylic

14 1/8 × 7 1/2 × 6 3/8 in. (35.9 × 19.1 × 16.2 cm)

Gift of the Patti Skigen, LL.B. 1968, Collection

2019.48.30



Ceramics

Artist: Melissa Antonio (Acoma Pueblo, born 1965)

Seed Jar

2018

Hand-built Acoma clay with slip

H. 3 1/4 × Diam. 3 1/2 in. (8.3 × 8.9 cm)

Gift of the Patti Skigen, LL.B. 1968, Collection

2019.48.1



Artist: Harrison Begay, Jr. (Diné [Navajo], born 1961)

Bowl

20th–21st century

Earthenware

H. 4 × Diam. 4 in. (10.2 × 10.2 cm)

Gift of the Patti Skigen, LL.B. 1968, Collection

2019.48.8



Artist: Autumn Borts-Medlock (Santa Clara Pueblo, born 1967)

Canteen with a Parrot

2000

Hand-built, carved, and polished Santa Clara clay

H. 4 1/8 × Diam. 5 1/4 in. (10.5 × 13.3 cm)

Janet and Simeon Braguin Fund

2019.49.2



Artist: Barbara Cerno (Acoma Pueblo, born 1951)

Artist: Joseph Cerno (Acoma Pueblo, born 1947)

Polychrome Jar

2001

Hand-built Acoma clay with slip

H. 9 × Diam. 10 in. (22.9 × 25.4 cm)

Gift of the Patti Skigen, LL.B. 1968, Collection

2019.48.2



Artist: Alice Cling (Diné [Navajo], born 1946)

Vase

2004

Earthenware

H. 7 1/4 × Diam. 3 1/2 in. (18.4 × 8.9 cm)

Gift of the Patti Skigen, LL.B. 1968, Collection

2019.48.9



Artist: Carolyn Concho (Acoma Pueblo, born 1961)

Seed Pot with a Lizard, Birds, and Fish

1998

Hand-built Acoma clay with slip

H. 1 3/4 × Diam. 3 1/2 in. (4.4 × 8.9 cm)

Gift of the Patti Skigen, LL.B. 1968, Collection

2019.48.7



Artist: Susan Folwell (Santa Clara Pueblo, born 1970)

Shinto Bowl

2004

Hand-built and painted Santa Clara clay

H. 4 1/2 × Diam. 13 1/2 in. (11.4 × 34.3 cm)

Gift of the Patti Skigen, LL.B. 1968, Collection

2019.48.15



Artist: Tammy Garcia (Santa Clara Pueblo, born 1969)

Wedding Vase with Birds and Anasazi Motifs

2003

Hand-built, carved, and polished Santa Clara clay

H. 9 × Diam. 6 in. (22.9 × 15.2 cm)

Gift of the Patti Skigen, LL.B. 1968, Collection

2019.48.16



Artist: Goldenrod (Santa Clara Pueblo, born 1942)

Bowl with Women Wearing Tribal Robes

late 20th–early 21st century

Hand-built, carved, and polished Santa Clara clay with slip

H. 1 3/4 × Diam. 2 1/2 in. (4.4 × 6.4 cm)

Gift of the Patti Skigen, LL.B. 1968, Collection

2019.48.17



Artist: Diane Lewis (Acoma Pueblo, born 1960)

Polychrome Seed Pot

late 20th–early 21st century

Hand-built Acoma clay with slip

H. 1 1/4 × Diam. 3 3/4 in. (3.2 × 9.5 cm)

Gift of the Patti Skigen, LL.B. 1968, Collection

2019.48.3



Artist: Edmundo Lopez (Mata Ortiz [Casas Grandes Pueblo], active 21st century)

Bowl

ca. 2005

Earthenware

H. 5 3/4 × Diam. 7 in. (14.6 × 17.8 cm)

Gift of the Patti Skigen, LL.B. 1968, Collection

2019.48.13



Artist: Rebecca Lucario (Acoma Pueblo, born 1951)

Polychrome Bowl with a Scorpion

late 20th–early 21st century

Hand-built Acoma clay with slip

Diam. 3 1/2 in. (8.9 cm)

Gift of the Patti Skigen, LL.B. 1968, Collection

2019.48.4



Artist: Maria Martinez (P'ohwhóge Owingeh [San Ildefonso Pueblo], 1887–1980)

Artist: Santana Martinez (P'ohwhóge Owingeh [San Ildefonso Pueblo], 1909–2002)

Plate with Feathers

20th century

Hand-built and polished San Ildefonso clay with slip

Diam. 13 in. (33 cm)

Gift of the Patti Skigen, LL.B. 1968, Collection

2019.48.26



Artist: Les Namingha (Hopi and Zuni, born 1967)

Solo

2009

Earthenware with pigment

H. 7 × Diam. 8 in. (17.8 × 20.3 cm)

Janet and Simeon Braguin Fund

2019.49.1



Artist: Dusty Naranjo (Santa Clara Pueblo, born 1968)

Vase with a Fish and Dragonfly Design

2002

Hand-built, carved, and polished Santa Clara clay with slip

H. 5 5/8 × Diam. 5 in. (14.3 × 12.7 cm)

Gift of the Patti Skigen, LL.B. 1968, Collection

2019.48.18



Artist: Wallace Nez (Diné [Navajo] and American, born 1972)

Untitled

1999

Earthenware with pigment

H. 3 × Diam. 3 1/4 in. (7.6 × 8.2 cm)

Gift of the Patti Skigen, LL.B. 1968, Collection

2019.48.10



Artist: Pahponee (Kickapoo and Potawatomi, born 1958)

Bowl

1999

Earthenware

Diam. 9 1/4 in. (23.5 cm)

Gift of the Patti Skigen, LL.B. 1968, Collection

2019.48.29



Artist: Georgia Patricio (Acoma Pueblo, active 20th–21st century)

Seed Pot with a Geometric Design

1997

Hand-built Acoma clay with slip

H. 1 3/4 × Diam. 3 1/2 in. (4.4 × 8.9 cm)

Gift of the Patti Skigen, LL.B. 1968, Collection

2019.48.5



Artist: Noe Quezada (Mata Ortiz [Casas Grandes Pueblo], active 21st century)

Vase

ca. 2001

Earthenware

H. 9 1/4 × Diam. 8 in. (23.5 × 20.3 cm)

Gift of the Patti Skigen, LL.B. 1968, Collection

2019.48.12



Artist: Linda Tafoya Sanchez (Santa Clara Pueblo, born 1962)

Canteen with a Spiral Design

2010

Hand-built, carved, and polished Santa Clara clay with cork and leather

H. 4 1/2 × Diam. 5 1/4 in. (11.4 × 13.3 cm)

Gift of the Patti Skigen, LL.B. 1968, Collection

2019.48.19



Artist: Russell Sanchez (P'ohwhóge Owingeh [San Ildefonso Pueblo], born 1963)

Jar

2005

Earthenware

H. 6 1/2 × Diam. 5 in. (16.5 × 12.7 cm)

Gift of the Patti Skigen, LL.B. 1968, Collection

2019.48.27



Artist: Richard Zane Smith (Wyandotte, born 1955)

Jar

ca. 1997

Earthenware

H. 18 × Diam. 20 in. (45.7 × 50.8 cm)

Gift of the Patti Skigen, LL.B. 1968, Collection

2019.48.11



Artist: Anita Suazo (White Eagle) (Santa Clara Pueblo, born 1937)

Bowl with a Bear Paw

late 20th–early 21st century

Hand-built, carved, and polished Santa Clara clay

H. 2 1/4 × Diam. 3 3/4 in. (5.7 × 9.5 cm)

Gift of the Patti Skigen, LL.B. 1968, Collection

2019.48.20



Artist: LuAnn Tafoya (Santa Clara Pueblo, born 1938)

Water Jar with a Serpent Design

late 20th–early 21st century

Hand-built, carved, and polished Santa Clara clay

H. 11 × Diam. 12 in. (27.9 × 30.5 cm)

Gift of the Patti Skigen, LL.B. 1968, Collection

2019.48.21



Artist: Robert P. Tenorio (Santo Domingo Pueblo [Kewa], born 1950)

Bowl

2019

Earthenware with pigment

H. 7 1/2 × Diam. 13 1/2 in. (19.1 × 34.3 cm)

Janet and Simeon Braguin Fund

2019.49.3



Artist: Thomas Tenorio (Santo Domingo Pueblo [Kewa], born 1963)

Bowl

2011

Earthenware with pigment

H. 6 1/4 × Diam. 7 1/4 in. (15.9 × 18.4 cm)

Gift of the Patti Skigen, LL.B. 1968, Collection

2019.48.25



Artist: Dominique Toya (Mariam Camille Toya) (Jemez Pueblo and American, born 1971)

Jar

2006

Earthenware

H. 7 3/4 × Diam. 7 3/4 in. (19.7 × 19.7 cm)

Gift of the Patti Skigen, LL.B. 1968, Collection

2019.48.14



Artist: Sandra Victorino (Acoma Pueblo, born 1958)

Vase with a Swirl Design

2009

Hand-built Acoma clay with slip

H. 4 1/2 × Diam. 4 1/4 in. (11.4 × 10.8 cm)

Gift of the Patti Skigen, LL.B. 1968, Collection

2019.48.6



Artist: Daryl Whitegeese (Santa Clara Pueblo, born 1964)

Bowl

2003

Earthenware

H. 6 1/2 × Diam. 7 in. (16.5 × 17.8 cm)

Gift of the Patti Skigen, LL.B. 1968, Collection

2019.48.23



Artist: Nancy Youngblood (Santa Clara Pueblo, born 1955)

Melon Bowl with a Swirl Design

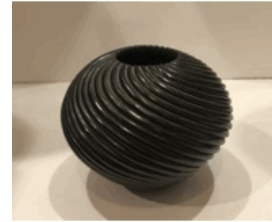
2011

Hand-built, carved, and polished Santa Clara clay

H. 3 3/4 × Diam. 4 1/2 in. (9.5 × 11.4 cm)

Gift of the Patti Skigen, LL.B. 1968, Collection

2019.48.24



Installations

Artist: Do Ho Suh (South Korean, born 1962, M.F.A. 1997)

Boiler Room, London Studio

2015

Polyester fabric and stainless-steel tubes

90 9/16 × 63 × 74 7/16 in. (230 × 160 × 189 cm)

Anonymous gift

2018.149.1



Paintings

Artist: Lennart Anderson (American, 1928–2015)

Seated Figure

1988

Oil on canvas

70 × 60 in. (177.8 × 152.4 cm)

Gift of the Joel and Carole Bernstein Family Collection

2019.27.6

Artist: Jennifer Losch Bartlett (American, born 1941, B.F.A. 1964, M.F.A. 1965)

Goodbye Bill

2001

Oil on canvas

96 × 144 in. (243.8 × 365.8 cm)

Gift of the Joel and Carole Bernstein Family Collection

2019.27.7

Artist: William George Beckman (American, born 1942)

Woman and Man

1988

Oil on Board

84 × 84 in. (213.4 × 213.4 cm)

Gift of the Joel and Carole Bernstein Family Collection

2019.27.3

Artist: Georges Braque (French, 1882–1963)

Les Roseaux (The Reeds)

1951

Oil and sand on canvas

15 1/4 × 18 1/2 in. (38.7 × 47 cm)

Bequest of Drue Heinz

2018.145.1



Artist: Donnataria Bruton (American, 1954–2012, M.F.A. 1991)

Personalities Are Portable, from the *Daze Work* series

ca. 1995

Acrylic, graphite, crayon, ink, tape, and cut-and-pasted paper on board

24 × 48 in. (61 × 121.9 cm)

Gift of the estate of Donnataria Bruton and Cade Tompkins Projects

2019.8.1



Artist: Rackstraw Downes (American, born England 1939, B.F.A. 1963,

M.F.A 1964)

Rehanna

1974

Oil on canvas

25 3/4 × 14 1/2 in. (65.4 × 36.8 cm)

Gift of the Joel and Carole Bernstein Family Collection

2019.27.5



Artist: April Gornik (American, born 1953)

Cloud Wall

1983

Oil on canvas

84 × 90 in. (213.4 × 228.6 cm)

Gift of Helen Runnells DuBois, B.A. 1978

2019.54.1



Artist: Tobi Kahn (American, born 1952)

Untitled

1983–84

Acrylic on board in an artist's frame

28 × 20 in. (71.1 × 50.8 cm)

Gift of Georgene Simon Dreishpoon in memory of Dr. Irving H. Dreishpoon

2018.160.1



Artist: Ellen Carley McNally (American, 1918–2019, B.F.A. 1945)

Sister Mary Margaret

early 1950s

Tempera on panel

sight in frame: 15 15/16 × 9 5/8 in. (40.5 × 24.5 cm)

Gift of the family of Ellen Carley McNally, B.F.A. 1945

2019.16.1



Artist: Edward Melcarth (American, 1914–1973)

Private Worlds

1961

Oil on canvas

58 × 58 in. (147.3 × 147.3 cm)

Gift of Kip Forbes in honor of Susan G. and John W. Jackson, B.A. 1967

2019.7.1



Artist: Sadamasa Motonaga (Japanese, 1922–2011)

Work

1963

Oil on canvas with pebbles

45 3/4 × 36 in. (116.21 × 91.44 cm)

Gift of Ann and Fred Notehelper

2019.50.1



Artist: Sylvia Plimack Mangold (American, born 1938, B.F.A. 1961)

Street Hall

1959

Acrylic on canvas

71 5/8 × 48 × 1 1/4 in. (181.9 × 121.9 × 3.2 cm)

Gift of Sylvia Plimack Mangold, B.F.A. 1961, and Robert Mangold, B.F.A. 1961,

M.F.A. 1963

2019.69.1



Artist: Julian Stanczak (American, 1928–2017, M.F.A. 1956)

Rhythmic Overlay

1987

Acrylic on canvas

56 1/2 × 36 1/2 in. (143.5 × 92.7 cm)

Gift in honor of Frances P. Taft, M.A. 1948, and Seth C. Taft, B.A. 1944,

LL.B. 1948, by their children

2019.47.1



Artist: Hedda Sterne (American, born Romania, 1910–2011)

Untitled

1946

Oil on Canvas

36 × 24 in. (91.4 × 61 cm)

Gift of Claire A. Nivola in memory of her mother, Ruth Nivola

2019.18.1



Artist: Horacio Torres (Uruguayan, active in the United States, 1924–1976)

Untitled

1973

Oil on canvas

64 × 50 in. (162.6 × 127 cm)

Gift of the Joel and Carole Bernstein Family Collection

2019.27.4



Artist: Maurice de Vlaminck (French, 1876–1958)

Still Life

ca. 1910

Oil on canvas

25 1/4 × 21 1/4 in. (64.1 × 54 cm)

Gift of Abby Pratt in honor of her parents, Ruth and Gerald Dickler

2019.30.1



Artist: Kara Walker (American, born 1969)

Untitled

ca. 1994

Collage; cut paper on acrylic on canvas

10 1/4 × 10 1/4 in. (26 × 26 cm)

Janet and Simeon Braguin Fund

2018.180.1



Sculpture

Artist: Nicholas Benson (American, born 1964)

Base 64 encoded alphabet

20th century

Stone

22 × 19 × 4 in. (55.9 × 48.3 × 10.2 cm)

Gift of Allan Chasanoff, B.A. 1961

2019.71.1



Artist: Nicholas Benson (American, born 1964)

Base 64 encoded alphabet

20th century

Stone

22 × 19 × 4 in. (55.9 × 48.3 × 10.2 cm)

Gift of Allan Chasanoff, B.A. 1961

2019.71.2



Artist: Nicholas Benson (American, born 1964)

Base 64 encoded alphabet

2016

Stone

22 × 19 × 4 in. (55.9 × 48.3 × 10.2 cm)

Gift of Allan Chasanoff, B.A. 1961

2019.71.3



Artist: Isabel Case Borgatta (American, 1921–2017, B.F.A. 1944)

Judith and Holofernes

ca. 1950s

Wood

29 × 8 × 8 in. (73.7 × 20.3 × 20.3 cm)

Gift of Francesca Borgatta, Mia Borgatta, and Paola Borgatta

2019.28.1



Artist: Sedrick Huckaby (American, born 1975, M.F.A. 1999)

If perhaps by chance I find myself encaged

2016

Oil on canvas and oil on CelluClay

36 3/4 × 41 1/2 × 10 in. (93.4 × 105.4 × 25.4 cm)

Purchased with gifts from Jinna and Jerold Lancourt in honor of Benjamine Spencer the Valley House and Sculpture Garden; and Debra Stevens and Scott Jackson; and with the Janet and Simeon Braguin Fund

2018.150.1



Artist: Cannupa Hanska Luger (Mandan, Hidatsa, Arikara, Lakota, Norwegian, and Austrian, born 1979)

Lost Boy IV, from the series *Never Neverland*

2016

Ceramic with pigment

22 3/4 × 10 × 4 1/4 in. (57.7 × 25.4 × 10.8 cm)

Gift of the Patti Skigen, LL.B. 1968, Collection

2019.48.28



Artist: Manuel Neri (American, born 1930)

Plaster Mask IV

ca. 1960

Plaster, oil-based enamel, graphite, wire, and burlap

9 7/8 × 6 1/4 × 5 5/8 in. (25.08 × 15.88 × 14.29 cm)

Gift of The Manuel Neri Trust

2019.20.1



Artist: Manuel Neri (American, born 1930)

Ceramic Study for Seated Figure

1990

Clay with polychrome glaze

8 7/8 × 3 3/4 × 4 1/4 in. (22.5 × 9.5 × 10.8 cm)

Gift of Mr. and Mrs. Gerald D. Kohs in honor of Jock Reynolds and his support for artists, their ideas, and their work

2018.117.1

Artist: George Segal (American, 1924–2000)

Force Power Tools

1999

Plaster, acrylic paint, Lite-Brite bulbs, sockets, and wire

96 × 96 × 32 in. (243.8 × 243.8 × 81.3 cm)

Gift of Carroll and Donna Janis

2018.187.1



Artist: Joel Shapiro (American, born 1941)

Untitled

1984–85

Plaster

37 × 42 × 40 1/2 in. (94 × 106.7 × 102.9 cm)

Gift of Paula Cooper

2019.45.1

Artist: Kathleen Wall (Jemez Pueblo, born 1972)

Koshare Clown Holding a Watermelon

2010/11

Hand-built Jemez clay with colored slip and corn husks

29 × 9 × 8 1/2 in. (73.7 × 22.9 × 21.6 cm)

Gift of the Patti Skigen, LL.B. 1968, Collection

2019.48.22a-b



Textiles

Artist: Marie Watt (Seneca, born 1967, M.F.A. 1996)

First Teachers Balance the Universe, Part I: Things That Fly (Predator)

2015

Reclaimed wool blankets, embroidery floss, and thread

74 × 136 in. (188 × 345.4 cm)

Janet and Simeon Braguin Fund

2018.181.1



Artist: Marie Watt (Seneca, born 1967, M.F.A. 1996)

First Teachers Balance the Universe, Part II: Things That Fly (Prey)

2015

Reclaimed wool blankets, embroidery floss, and thread

74 × 136 in. (188 × 345.4 cm)

Janet and Simeon Braguin Fund

2018.181.2



Numismatics

223 Greek, Hellenistic, and Roman coins

5th century B.C.–early 6th century A.D.

Medium variable

dimensions variable

Gift of the Mitchel family in honor of Professor F. W. Mitchel, B.A. 1944,

M.A. 1944, Ph.D. 1954

2018.177.1-.223

Tetradrachm of Ptolemy VIII Euergetes II (Physcon)

Paphos

139–138 B.C.

Silver

12.87 g, 12:00, 28 mm

Ruth Elizabeth White Fund

2019.12.1



Denarius of Q. Pomponius Musa

Rome

66 B.C.

Silver

2.88 g, 11:00, 19.16 mm

Gift of Susan B. Matheson

2018.144.1

Connecticut Copper

New Haven, Connecticut

1785

Copper

8.97 g, 6:00, 28.29 mm

Leonard C. Hanna, Jr., Class of 1913, Fund

2019.40.2

Connecticut Copper

New Haven, Connecticut

1785

Copper

9.52 g, 6:00, 29.21 mm

Leonard C. Hanna, Jr., Class of 1913, Fund

2019.40.4

Connecticut Copper

New Haven, Connecticut

1785

Copper

9.10 g, 6:00, 28.77 mm

Leonard C. Hanna, Jr., Class of 1913, Fund

2019.40.5

Connecticut Copper

New Haven, Connecticut

1786

Copper

9.88 g, 6:00, 28.00 mm

Leonard C. Hanna, Jr., Class of 1913, Fund

2019.40.1

Connecticut Copper

New Haven, Connecticut

1786

Copper

10.18 g, 6:00, 28.37 mm

Leonard C. Hanna, Jr., Class of 1913, Fund

2019.40.3

Connecticut Copper

New Haven, Connecticut

1786

Copper

11.33 g, 6:00, 28.31 mm

Leonard C. Hanna, Jr., Class of 1913, Fund

2019.40.6

Connecticut Copper

New Haven, Connecticut

1787

Copper

9.37 g, 7:00, 28.28 mm

Leonard C. Hanna, Jr., Class of 1913, Fund

2019.40.7



Connecticut Copper

New Haven, Connecticut

1787

Copper

8.69 g, 5:00, 28.84 mm

Leonard C. Hanna, Jr., Class of 1913, Fund

2019.40.8

Connecticut Copper

New Haven, Connecticut

1787

Copper

5.03 g, 7:00, 27.20 mm

Leonard C. Hanna, Jr., Class of 1913, Fund

2019.40.9

115 medals

Philadelphia, Pennsylvania

19th–20th century

Medium variable

dimensions variable

Gift of Susan Freund Borden

2018.163.1-.115

Artist: John William Casilear (American, 1811–1893)

Victory Advancing

United States

1830–93

Graphite on paper

9 7/16 × 7 1/2 in. (24 × 19 cm)

The Susan G. and John W. Jackson, B.A. 1967, Endowment Fund for Numismatics

2019.26.1



Manufacturer: American Bank Note Company (New York)

Die for *The Battle of Princeton*

New York

1850–1950

Steel

6 × 5 in. (15.2 × 12.7 cm)

Gift of Susan G. and John W. Jackson, B.A. 1967, and the Liana Foundation

2018.148.1



Manufacturer: American Bank Note Company (New York)
Intaglio proof for *The Battle of Princeton*
New York
1850–1950
Ink on paper
8 7/16 × 5 9/16 in. (21.5 × 14.1 cm)
Gift of Susan G. and John W. Jackson, B.A. 1967, and the Liana Foundation
2018.148.2



Manufacturer: Toppan, Carpenter, Casilear & Company (American, 1851–61)
Beehive with Flowers
United States
1851–61
Ink with sepia wash on paper
5 1/8 × 7 7/8 in. (13 × 20 cm)
The Susan G. and John W. Jackson, B.A. 1967, Endowment Fund for
Numismatics
2019.26.4



Manufacturer: Toppan, Carpenter, Casilear & Company (American, 1851–61)
Nautical Commerce and America
United States
ca. 1860–90
Ink and pencil on paper
mat opening with image: 4 3/4 × 4 5/16 in. (12 × 11 cm)
The Susan G. and John W. Jackson, B.A. 1967, Endowment Fund for
Numismatics
2019.26.6



Artist: Charles Burt (American, 1823–1892)
Small Eagle
United States
1858–78
Ink on paper
14 3/16 × 11 13/16 in. (36 × 30 cm)
The Susan G. and John W. Jackson, B.A. 1967, Endowment Fund for
Numismatics
2019.26.2



Artist: W. Croom (American)

Manufacturer: Toppan, Carpenter, Casilear & Company (American, 1851–61)

Locomotive and Passenger Car

United States

1860–80

Pencil and wash on paper

3 15/16 × 5 11/16 in. (10 × 14.5 cm)

The Susan G. and John W. Jackson, B.A. 1967, Endowment Fund for Numismatics

2019.26.5



\$1 Legal Tender Composite Face Essay

United States

1862

Ink on paper

3 1/2 × 8 in. (8.9 × 20.3 cm)

The Susan G. and John W. Jackson, B.A. 1967, Endowment Fund for Numismatics

2019.25.1



Manufacturer: American Bank Note Company (New York)

Album honoring General John A. Dix

New York, New York

1865–80

Ink on paper in leather-bound album

8 3/4 × 6 1/4 × 1 in. (22.2 × 15.9 × 2.5 cm)

Gift of Susan G. and John W. Jackson, B.A. 1967, and the Liana Foundation
2018.165.1



Artist, attributed to: Marcus Wickliffe Baldwin (American, 1853–1925)

Old Abe, the Live Wisconsin War Eagle

United States

1875–80

Graphite and wash on paper

11 13/16 × 9 5/8 in. (30 × 24.5 cm)

The Susan G. and John W. Jackson, B.A. 1967, Endowment Fund for Numismatics

2019.26.3



\$5 National Bank Note, North Carolina Composite Essay

United States

1876

Ink on paper

3 13/16 × 8 1/4 in. (9.7 × 21 cm)

The Susan G. and John W. Jackson, B.A. 1967, Endowment Fund for Numismatics

2019.25.21



\$5 Silver Certificate Design Production Photograph

United States

1891?

Albumen print

4 13/16 × 9 in. (12.2 × 22.8 cm)

The Susan G. and John W. Jackson, B.A. 1967, Endowment Fund for Numismatics

2019.25.14



Engraver: G. F. C. Smillie (American, 1854–1924)

Manufacturer: Bureau of Engraving and Printing (American, founded 1894)

\$5 Silver Certificate Progressive Essay Proof, Central Vignette

United States

1894

Ink on paper

3 3/4 × 7 5/16 in. (9.6 × 18.5 cm)

The Susan G. and John W. Jackson, B.A. 1967, Endowment Fund for Numismatics

2019.25.11



Engraver: G. F. C. Smillie (American, 1854–1924)

Manufacturer: Bureau of Engraving and Printing (American, founded 1894)

\$5 Silver Certificate Progressive Essay Proof, Central Vignette

United States

1894

Ink on paper

3 3/8 × 6 3/4 in. (8.6 × 17.1 cm)

The Susan G. and John W. Jackson, B.A. 1967, Endowment Fund for Numismatics

2019.25.12



Engraver: Charles Schlecht (American, born Germany, 1843–1905)

Engraver: Will H. Low (American, 1853–1932)

Manufacturer: Bureau of Engraving and Printing (American, founded 1894)

\$1 Silver Certificate Face Proof

United States

1895

Ink on paper

4 5/16 × 8 3/4 in. (10.9 × 22.3 cm)

The Susan G. and John W. Jackson, B.A. 1967, Endowment Fund for Numismatics

2019.25.2



Engraver: G. F. C. Smillie (American, 1854–1924)

Manufacturer: Bureau of Engraving and Printing (American, founded 1894)

\$5 Silver Certificate Essay Face Proof

United States

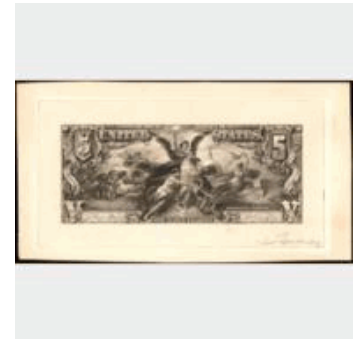
1895

Ink on paper

5 3/8 × 9 7/8 in. (13.7 × 25.1 cm)

The Susan G. and John W. Jackson, B.A. 1967, Endowment Fund for Numismatics

2019.25.16



\$10 Silver Certificate Progressive Proof, Central Vignette

United States

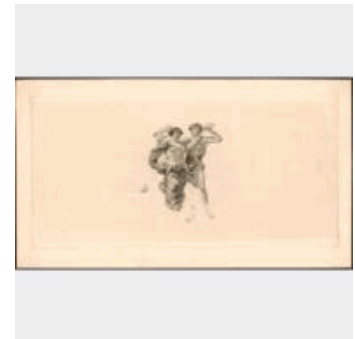
1895–97

Ink on paper

5 1/2 × 9 3/4 in. (14 × 24.8 cm)

The Susan G. and John W. Jackson, B.A. 1967, Endowment Fund for Numismatics

2019.25.20



Manufacturer: Bureau of Engraving and Printing (American, founded 1894)

\$2 Silver Certificate Back Proof

United States

1896

Ink on paper

4 3/4 × 8 1/4 in. (12.1 × 21 cm)

The Susan G. and John W. Jackson, B.A. 1967, Endowment Fund for Numismatics

2019.25.9



Manufacturer: Bureau of Engraving and Printing (American, founded 1894)

\$2 Silver Certificate Essay Face Proof

United States

1896

Ink on paper

5 3/4 × 10 in. (14.6 × 25.4 cm)

The Susan G. and John W. Jackson, B.A. 1967, Endowment Fund for Numismatics

2019.25.7



Manufacturer: Bureau of Engraving and Printing (American, founded 1894)

Designer: Edwin Howland Blashfield (American, 1848–1936)

Engraver: Charles Schlecht (American, born Germany, 1843–1905)

Engraver: G. F. C. Smillie (American, 1854–1924)

\$2 Silver Certificate Essay Face Proof

United States

1896

Ink on paper

4 13/16 × 9 1/16 in. (12.2 × 23 cm)

The Susan G. and John W. Jackson, B.A. 1967, Endowment Fund for Numismatics

2019.25.8



Manufacturer: Bureau of Engraving and Printing (American, founded 1894)

Designer: Edwin Howland Blashfield (American, 1848–1936)

Engraver: G. F. C. Smillie (American, 1854–1924)

Engraver: Charles Schlecht (American, born Germany, 1843–1905)

\$2 Silver Certificate Progressive Essay Face Proof, Central Vignette

United States

1896

Ink on paper

3 1/2 × 7 1/2 in. (8.9 × 19.1 cm)

The Susan G. and John W. Jackson, B.A. 1967, Endowment Fund for Numismatics

2019.25.4



Manufacturer: Bureau of Engraving and Printing (American, founded 1894)

\$2 Silver Certificate Progressive Essay Proof

United States

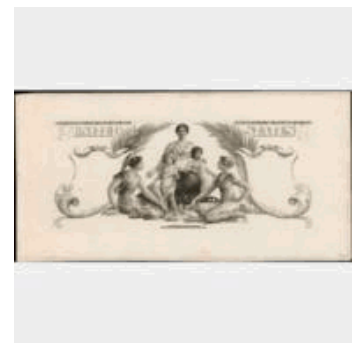
1896

Ink on paper

4 3/4 × 9 1/4 in. (12.1 × 23.5 cm)

The Susan G. and John W. Jackson, B.A. 1967, Endowment Fund for Numismatics

2019.25.6



Manufacturer: Bureau of Engraving and Printing (American, founded 1894)

\$2 Silver Certificate Progressive Face Die Proof

United States

1896

Ink on paper

3 3/4 × 7 15/16 in. (9.6 × 20.1 cm)

The Susan G. and John W. Jackson, B.A. 1967, Endowment Fund for
Numismatics

2019.25.5



Engraver: G. F. C. Smillie (American, 1854–1924)

Manufacturer: Bureau of Engraving and Printing (American, founded 1894)

\$5 Silver Certificate Face Approval Proof

United States

1896

Ink on paper

5 3/16 × 9 3/16 in. (13.2 × 23.4 cm)

The Susan G. and John W. Jackson, B.A. 1967, Endowment Fund for
Numismatics

2019.25.17



Engraver: G. F. C. Smillie (American, 1854–1924)

Engraver: Robert Ponickau (American, born Germany, 1846–1920)

Engraver: D. S. Ronaldson (American, born England, 1799–1862)

Designer: E. E. Meyers (American, 1832–1909)

Engraver: Edward M. Hall (American, 1862–1939)

Engraver: George U. Rose, Jr. (American)

Engraver: J. Kennedy (American, 1845–1930)

Engraver: L. F. Ellis (American, born 1870)

Engraver: Seymour B. Many (American, died 1900)

Engraver: Thomas F. Morris (American, 1853–1898)

Designer: Walter Shirlaw (American, born Scotland, 1838–1909)

Manufacturer: Bureau of Engraving and Printing (American, founded 1894)

\$5 Silver Certificate Progressive Essay Face Proof

United States

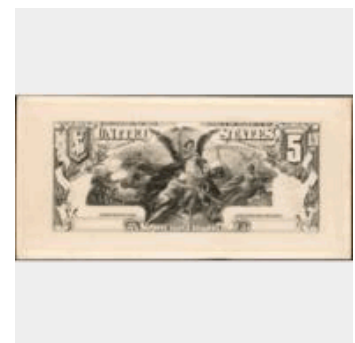
1896

Ink on paper

4 7/16 × 9 in. (11.2 × 22.9 cm)

The Susan G. and John W. Jackson, B.A. 1967, Endowment Fund for
Numismatics

2019.25.15



Engraver: G. F. C. Smillie (American, 1854–1924)

Manufacturer: Bureau of Engraving and Printing (American, founded 1894)

\$5 Silver Certificate Progressive Essay Proof, Central Vignette

United States

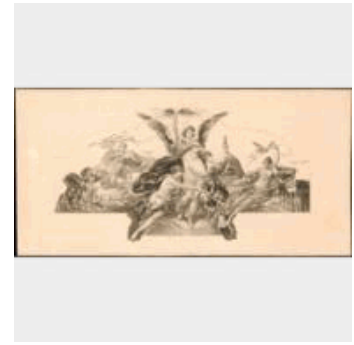
1896

Ink on paper

3 1/2 × 7 3/16 in. (8.9 × 18.3 cm)

The Susan G. and John W. Jackson, B.A. 1967, Endowment Fund for Numismatics

2019.25.13



Engraver: Robert Ponickau (American, born Germany, 1846–1920)

Engraver: Edward M. Hall (American, 1862–1939)

Engraver: George U. Rose, Jr. (American)

Manufacturer: Bureau of Engraving and Printing (American, founded 1894)

Designer: Will H. Low (American, 1853–1932)

\$1 Silver Certificate Face Essay Proof

United States

1897

Ink on paper

3 3/8 × 7 3/4 in. (8.5 × 19.7 cm)

The Susan G. and John W. Jackson, B.A. 1967, Endowment Fund for Numismatics

2019.25.3



\$10 Silver Certificate Proposed Face Photograph

United States

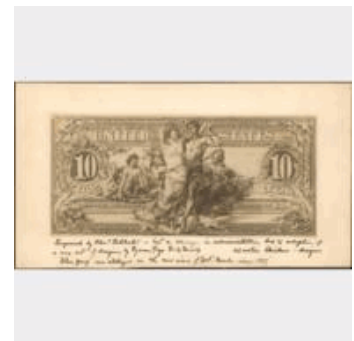
1897

Sepia-toned photograph

4 7/8 × 9 in. (12.4 × 22.9 cm)

The Susan G. and John W. Jackson, B.A. 1967, Endowment Fund for Numismatics

2019.25.19



Manufacturer: Bureau of Engraving and Printing (American, founded 1894)

Designer: Edwin Howland Blashfield (American, 1848–1936)

\$2 Silver Certificate Progressive Essay Face Proof

United States

1897

Ink on paper

4 13/16 × 8 3/8 in. (12.3 × 21.2 cm)

The Susan G. and John W. Jackson, B.A. 1967, Endowment Fund for Numismatics

2019.25.10



Manufacturer: Bureau of Engraving and Printing (American, founded 1894)

Designer: Walter Shirlaw (American, born Scotland, 1838–1909)

Engraver: G. F. C. Smillie (American, 1854–1924)

\$5 Silver Certificate Progressive Essay Face Proof

United States

1897

Ink on paper

4 15/16 × 9 5/8 in. (12.5 × 24.4 cm)

The Susan G. and John W. Jackson, B.A. 1967, Endowment Fund for Numismatics

2019.25.18



\$5 National Bank Note, Proposed Drawing for the Back

United States

1900

Ink on paper

5 1/2 × 8 in. (13.9 × 20.3 cm)

The Susan G. and John W. Jackson, B.A. 1967, Endowment Fund for Numismatics

2019.25.22



1,920 specimen bank notes from the Morowitz Specimen Bank Note Collection

20th century

Ink on paper

dimensions variable

Gift of Arthur H. Morowitz

2019.19.1-.1920

Engraver: G. F. C. Smillie (American, 1854–1924)

\$5 National Bank Note Progressive Essay Face Proof

United States

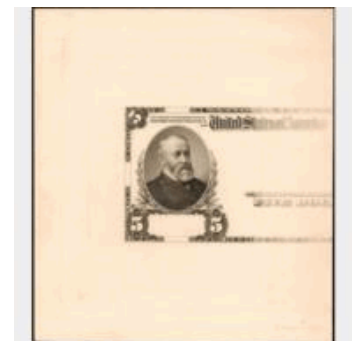
1902

Ink on paper

7 7/16 × 6 5/8 in. (18.9 × 16.9 cm)

The Susan G. and John W. Jackson, B.A. 1967, Endowment Fund for Numismatics

2019.25.23



Photography

Photographs

Artist: Anna Collette, American, born 1974 (M.F.A. 2003)

Untitled, from the series *Onion Creek*

2013, printed 2018

4 pigmented inkjet prints mounted on Dibond

23 7/16 × 75 9/16 in. (59.5 × 192 cm)

Richard Brown Baker, B.A. 1935, Fund

2019.36.1.1-4



Artist: Jen Davis (American, born 1978, M.F.A. 2008)

Steve and I, from the series *Eleven Years*

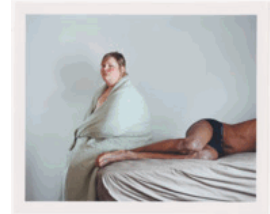
2006

Pigmented inkjet print

17 3/4 × 22 in. (45.1 × 55.9 cm)

Gift of Lee Marks and John C. DePrez, Jr., in honor of Richard Benson

2018.158.2



Artist: Jen Davis (American, born 1978, M.F.A. 2008)

New Haven Bedroom, from the series *Eleven Years*

2007

Pigmented inkjet print

18 5/16 × 22 7/16 in. (46.5 × 57 cm)

Gift of Lee Marks and John C. DePrez, Jr., in honor of Richard Benson

2018.158.1



Maker: E. & H. T. Anthony, American and Foreign Stereoscopic Emporium
(1842–1902)

White House, South Side

ca. 1859

Stereograph; albumen print laid on card

2 7/8 × 5 7/8 in. (7.3 × 15 cm)

Gift of Rosemarie Haag Bletter and Martin Filler in memory of Robert B. Silvers

2018.156.1

Artist: Jim Goldberg (American, born 1953)

Fourth maquette for *Raised by Wolves*

1993, printed 2018

Color coupler prints with ink and adhesive

5 7/8 × 3 15/16 × 2 1/2 in. (15 × 10 × 6.4 cm)

Gift of the artist in honor of Jock Reynolds, the Henry J. Heinz II Director,

1998–2018

2019.56.3



Artist: Jim Goldberg (American, born 1953)

Mory's Private Club

2013

Pigmented inkjet print

6 11/16 × 9 9/16 in. (17 × 24.3 cm)

Gift of the artist

2019.56.1



Artist: Jim Goldberg (American, born 1953)

Maeve K.

2014

Color instant print (Polaroid) with ink

2 13/16 × 3 3/4 in. (7.2 × 9.5 cm)

Gift of the artist

2019.56.2



Artist: John Mark Hall (American, 1952–2019)

IMG_1578 LeWitt Study

2015

Pigmented inkjet print

19 3/4 × 28 1/2 in. (50.2 × 72.4 cm)

Gift of the artist

2019.38.1



Artist: Pieter Hugo (South African, born 1976)

Themba Tshabalalala, from the series *There's a Place in Hell for Me and My Friends*

2011

Pigmented inkjet print

10 3/4 × 9 in. (27.3 × 22.9 cm)

Gift of Susan and Arthur Fleischer, Jr., B.A. 1953, LL.B. 1958

2019.5.3



Artist: Pieter Hugo (South African, born 1976)

James Webb, from the series *There's a Place in Hell for Me and My Friends*

2012

Inkjet print

10 3/4 × 9 in. (27.3 × 22.9 cm)

Gift of Susan and Arthur Fleischer, Jr., B.A. 1953, LL.B. 1958

2019.5.2.1

Artist: Sarah Jones (British, born 1959)

The Pond (London) (I)

2001

Chromogenic print

60 × 60 in. (152.4 × 152.4 cm)

Gift of Susan and Arthur Fleischer, Jr., B.A. 1953, LL.B. 1958

2019.5.1

Artist: Francis Olschafskie (American, born 1949)

Hands, Rome, Italy

2016

Chromogenic print

20 1/16 × 30 1/8 in. (50.9 × 76.5 cm)

Gift of Allan Chasanoff, B.A. 1961

2018.185.1



Artist: Clifford Ross (American, born 1952, B.A. 1974)

Wave I

1998

Gelatin silver print mounted on aluminum

57 × 95 in. (144.8 × 241.3 cm)

Gift of the artist

2019.60.1



Artist: Mark Ruwedel (American, active Canada, born 1954)

Neighbors #37

2008–12

Diptych; gelatin silver prints mounted on board

each 8 × 10 in. (20.3 × 25.4 cm)

Gift of the artist and Theresa Luisotti in honor of Jock Reynolds

2019.52.1a-b



Artist: Edward Steichen (American, born Luxembourg, 1879–1973)

Greta Garbo

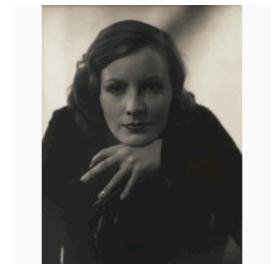
1928

Gelatin silver print

9 1/2 × 7 1/2 in. (24.2 × 19.1 cm)

Gift of the Doris Bry Trust

2018.84.25



Artist: Alfred Stieglitz (American, 1864–1946)

Spring Showers—The Street Cleaner

1900

Photogravure on Japanese paper

12 3/16 × 5 1/16 in. (31 × 12.8 cm)

Gift of the Doris Bry Trust

2018.84.22



Editor: Alfred Stieglitz (American, 1864–1946)

Camera Work

ca. 1903–17

Unique book with 93 photogravures

12 3/4 × 8 3/4 × 2 3/4 in. (32.4 × 22.2 × 7 cm)

Gift of the Doris Bry Trust

2018.84.8

Artist: Alfred Stieglitz (American, 1864–1946)

Going to the Post, Morris Park

1904

Photogravure

12 1/16 × 10 5/16 in. (30.7 × 26.2 cm)

Gift of the Doris Bry Trust

2018.84.10



Artist: Alfred Stieglitz (American, 1864–1946)

City of Ambition

1910

Photogravure

13 3/16 × 10 1/4 in. (33.5 × 26 cm)

Gift of the Doris Bry Trust

2018.84.23



Artist: Alfred Stieglitz (American, 1864–1946)

Horses, New York

1911

Gelatin silver print

3 7/16 × 4 7/16 in. (8.8 × 11.2 cm)

Gift of the Doris Bry Trust

2018.84.24



Artist: Alfred Stieglitz (American, 1864–1946)

Plum Tree, Lake George (or Rain Drops, Apple Tree)

1920

Platinum or palladium print

9 1/2 × 7 1/2 in. (24.2 × 19.1 cm)

Gift of the Doris Bry Trust

2018.84.9



Artist: Alfred Stieglitz (American, 1864–1946)

Portrait of Georgia, No. 1 (or Songs of the Sky)

1923

Gelatin silver print

3 9/16 × 4 1/2 in. (9 × 11.5 cm)

Gift of the Doris Bry Trust, Personal Best Collection

2018.84.6



Artist: Alfred Stieglitz (American, 1864–1946)

Portrait of Georgia, No. 2 (or Songs of the Sky)

1923

Gelatin silver print

3 9/16 × 4 1/2 in. (9 × 11.5 cm)

Gift of the Doris Bry Trust, Personal Best Collection

2018.84.7



Artist: Alfred Stieglitz (American, 1864–1946)

Equivalent

1925, printed 1927

Gelatin silver print mounted on board

4 1/2 × 3 9/16 in. (11.5 × 9.1 cm)

Gift of the Doris Bry Trust

2018.84.15



Artist: Alfred Stieglitz (American, 1864–1946)

The Dying Chestnut Tree

1927

Gelatin silver print mounted on board

9 1/4 × 7 1/16 in. (23.5 × 18 cm)

Gift of the Doris Bry Trust

2018.84.21



Artist: Alfred Stieglitz (American, 1864–1946)

Equivalent

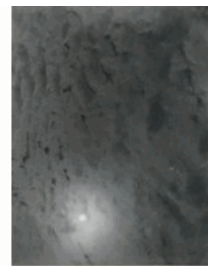
1927

Gelatin silver print mounted on board

4 3/4 × 3 9/16 in. (12 × 9 cm)

Gift of the Doris Bry Trust

2018.84.12



Artist: Alfred Stieglitz (American, 1864–1946)

Little House, Lake George

ca. 1933

Gelatin silver print mounted on board

7 3/16 × 8 3/16 in. (18.3 × 20.8 cm)

Gift of the Doris Bry Trust

2018.84.11



Artist: Alfred Stieglitz (American, 1864–1946)

Equivalent HH

1929

Gelatin silver print mounted on board

4 9/16 × 3 9/16 in. (11.6 × 9 cm)

Gift of the Doris Bry Trust

2018.84.14



Artist: Alfred Stieglitz (American, 1864–1946)

From My Window at An American Place, Southwest

1932

Gelatin silver print mounted on board

9 7/16 × 7 1/2 in. (24 × 19 cm)

Gift of the Doris Bry Trust

2018.84.13



Artist: Alfred Stieglitz (American, 1864–1946)

Equivalent 27A

1933

Gelatin silver print mounted on board

9 1/8 × 7 1/4 in. (23.2 × 18.4 cm)

Gift of the Doris Bry Trust

2018.84.16



Artist: Alfred Stieglitz (American, 1864–1946)

Grasses

1933

Gelatin silver print mounted on board

7 1/16 × 9 1/4 in. (18 × 23.5 cm)

Gift of the Doris Bry Trust

2018.84.19



Artist: Alfred Stieglitz (American, 1864–1946)

Hedge and Grasses, Lake George

1933

Gelatin silver print mounted on board

7 3/8 × 9 5/16 in. (18.7 × 23.6 cm)

Gift of the Doris Bry Trust

2018.84.20



Artist: Alfred Stieglitz (American, 1864–1946)

Poplars, Lake George

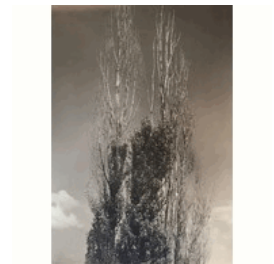
1933

Gelatin silver print mounted on board

9 1/8 × 6 5/16 in. (23.1 × 16 cm)

Gift of the Doris Bry Trust

2018.84.17



Artist: Alfred Stieglitz (American, 1864–1946)

The Two Poplars, Lake George

1934

Gelatin silver print mounted on board

8 7/8 × 5 13/16 in. (22.6 × 14.8 cm)

Gift of the Doris Bry Trust

2018.84.18



Artist: Terry Toedtemeier (American, 1947–2008)

Fort Dalles, Fort Walla Walla Military Road, Klickitat County, Washington

1987

Gelatin silver print

8 3/4 × 18 1/2 in. (22.2 × 47 cm)

Gift of Mark Ruwedel

2019.33.2



Artist: Terry Toedtemeier (American, 1947–2008)
Arch in Basalt Breccia, Lincoln County, Oregon
1992
Gelatin silver print
8 3/4 × 18 1/2 in. (22.2 × 47 cm)
Gift of Mark Ruwedel
2019.33.3



Artist: Terry Toedtemeier (American, 1947–2008)
Archway in Cinder Basalt Breccia, Lake County, Oregon
July 3, 1992
Gelatin silver print
8 3/4 × 18 1/2 in. (22.2 × 47 cm)
Gift of Mark Ruwedel
2019.33.4



Artist: Terry Toedtemeier (American, 1947–2008)
Crack in the Ground, Lake County, Oregon
1993
Gelatin silver print
8 3/4 × 18 1/2 in. (22.2 × 47 cm)
Gift of Mark Ruwedel
2019.33.1



Artist: Weegee (Arthur H. Fellig) (American, born Austria, 1899–1968)
Sailor and Girlfriend, Central Park
ca. 1940
Gelatin silver print
13 3/16 × 10 7/16 in. (33.5 × 26.5 cm)
Anonymous gift, Yale Class of 1983
2019.6.1



Artist: Donovan Wylie (Irish, born 1971)
Joe and Ken, New Haven, Connecticut
2014
Pigmented inkjet print
39 15/16 × 53 3/8 in. (101.5 × 135.5 cm)
Gift of the artist
2019.64.3



Artist: Donovan Wylie (Irish, born 1971)
New Haven, Connecticut
2014
Chromogenic print
78 3/4 × 59 1/16 in. (200 × 150 cm)
Gift of the artist
2019.64.1



Artist: Donovan Wylie (Irish, born 1971)
Winchester Factory, New Haven, Connecticut
2014
Chromogenic print
78 3/4 × 59 1/16 in. (200 × 150 cm)
Gift of the artist
2019.64.2



Artist: Unknown
Untitled [Group of women]
1890s
Tintype
4 1/8 × 3 1/8 in. (10.5 × 8 cm)
Everett V. Meeks, B.A. 1901, Fund
2018.134.1



Artist: Unknown
Untitled [Man in hat]
1880s–90s
Tintype
3 7/16 × 2 3/8 in. (8.7 × 6 cm)
Everett V. Meeks, B.A. 1901, Fund
2018.134.2



Artist: Unknown
Untitled [Two men in aprons]
1880s–90s
Tintype
3 9/16 × 2 7/16 in. (9 × 6.2 cm)
Everett V. Meeks, B.A. 1901, Fund
2018.134.3



Artist: Unknown
Front Street, New Matamoras, Ohio
1860s–70s
Tintype
8 7/16 × 6 1/2 in. (21.5 × 16.5 cm)
Everett V. Meeks, B.A. 1901, Fund
2018.133.2



Artist: Unknown
A Family and Homestead
1870s
Tintype
7 1/16 × 9 1/16 in. (18 × 23 cm)
Everett V. Meeks, B.A. 1901, Fund
2018.133.1



Artist: Unknown

A.A. Andreev

before 1950

Gelatin silver print mounted on embossed cardboard

sheet: 13 9/16 × 10 1/16 in. (34.5 × 25.5 cm)

The Allan Chasanoff, B.A. 1961, Russian Poster Collection, curated with Kevin Begos

2018.136.195



Artist: Unknown

A.I. Mikoyan

before 1950

Gelatin silver print mounted on embossed cardboard

sheet: 13 9/16 × 8 7/8 in. (34.5 × 22.5 cm)

The Allan Chasanoff, B.A. 1961, Russian Poster Collection, curated with Kevin Begos

2018.136.196



Artist: Unknown

A.N. Kosygin

before 1950

Gelatin silver print mounted on embossed cardboard

sheet: 13 9/16 × 8 7/8 in. (34.5 × 22.5 cm)

The Allan Chasanoff, B.A. 1961, Russian Poster Collection, curated with Kevin Begos

2018.136.197



Artist: Unknown

N.A. Voznesensky

before 1950

Gelatin silver print mounted on embossed cardboard

sheet: 13 9/16 × 10 1/16 in. (34.5 × 25.5 cm)

The Allan Chasanoff, B.A. 1961, Russian Poster Collection, curated with Kevin Begos

2018.136.198



Artist: Unknown

N.M. Shchvernik

before 1950

Gelatin silver print mounted on embossed cardboard

sheet: 13 9/16 × 10 1/16 in. (34.5 × 25.5 cm)

The Allan Chasanoff, B.A. 1961, Russian Poster Collection, curated with Kevin Begos

2018.136.199



Time-Based Media

Artist: Richard Benson (American, 1943–2017)

Recent Work

2014

Color photographs displayed on a 4k monitor using artist-modified FileMaker software

dimensions variable

Janet and Simeon Braguin Fund

2018.162.1

Prints and Drawings

Books

Artist: John Baldessari (American, 1931–2020)
Publisher: Inshoot, Uitgevers (Ghent, Belgium, founded 1938)
The Telephone Book (with Pearls)
1988
Artist's book
8 5/16 × 5 7/8 × 1/4 in. (21.1 × 14.9 × 0.6 cm)
Gift of John Walsh, B.A. 1961
2018.122.23



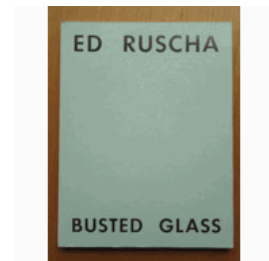
Artist: John Baldessari (American, 1931–2020)
Publisher: Little Steidl (Göttingen, Germany, founded 2005)
Miracle Chips®: Guaranteed Fresh
2009
Artist's book
10 1/16 × 8 3/16 × 3/8 in. (25.5 × 20.8 × 0.9 cm)
Gift of John Walsh, B.A. 1961
2018.122.24



Artist: Edward Ruscha (American, born 1937)
Printer: Ed Hamilton (American, born 1941)
Publisher: Hatje Cantz Verlag (Ostfildern, Germany, founded 1945)
Course of Empire: Paintings by Ed Ruscha, with texts by Joan Didion, Linda Norden, Donna De Salvo, and Frances Stark
2005
Artist's book
5 × 10 1/16 × 1/4 in. (12.7 × 25.5 × 0.7 cm)
Gift of John Walsh, B.A. 1961
2018.122.21



Artist: Edward Ruscha (American, born 1937)
Publisher: Gagosian Gallery (London, founded 1980)
Busted Glass
2007
Artist's book
13 × 10 × 1/2 in. (33 × 25.4 × 1.3 cm)
Gift of John Walsh, B.A. 1961
2018.122.22



Artist: Unknown

Publisher: N. de Simini (Jerusalem)

Album Souvenir: Flowers from the Holy Land; Fleurs et vues de la Terre Sainte

ca. 1935

Bound album with 12 chromolithographs and 11 pressed flowers, with olive wood covers

3 7/16 × 5 5/16 × 13/16 in. (8.7 × 13.5 × 2 cm)

Gift of Carole and Howard Tanenbaum

2018.141.1



Collages

Artist: Hannelore Baron (American, born Germany, 1926–1987)

Untitled

1976

Collage of cut fabrics and thread with ink

10 3/8 × 6 1/2 in. (26.4 × 16.5 cm) (irreg.)

Purchased with a gift from Jacquelyn and Carl H. Schiffman, M.F.A. Drama 1965

2018.151.1



Artist: Jane Hammond (American, born 1950)

Champagne Bucket with Tree Fern, Emerald Cuckoo, and Desert Bluebells

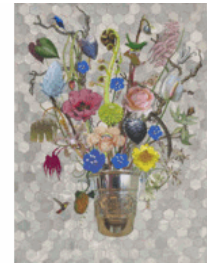
2018

Collage of lithography, relief printing, digital printing, colored pencil, watercolor, and gouache, hand cut and assembled on a mosaic of hand-painted papers over painted cotton rag

50 × 38 in. (127 × 96.5 cm)

Janet and Simeon Braguin Fund

2018.188.1



Artist: Norman Ives (American, 1923–1978, B.F.A. 1951, M.F.A. 1952)

Old Vic

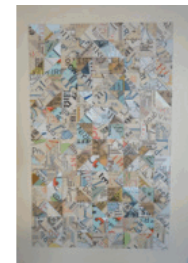
1973

Collage of cut and pasted labels, tickets, stamps, and other printed materials, on acrylic ground

13 15/16 × 11 1/8 in. (35.4 × 28.2 cm)

Gift of Thea Berggren, M.F.A. 1974

2019.39.1



Drawings and Watercolors

Artist: Giuseppe Aureli (Italian, 1858–1929)

An Elderly Priest Standing

1888

Watercolor with heightening in white gouache over graphite

20 3/8 × 14 5/8 in. (51.7 × 37.2 cm)

Bequest of Richard Stuart Teitz, B.A. 1963

2019.2.40



Artist: Alice Aycock (American, born 1946)

The Angels Continue Turning the Wheels of the Universe, Part II, in which the Angel in the Red Dress . . . Front Elevation

1978

Graphite

21 × 42 1/8 in. (53.4 × 107 cm)

Gift of Jean Crutchfield, Robert Hobbs, Michael W. Rabkin, and Chan B. Tom, B.A. 1977

2019.4.2



Artist: Alice Aycock (American, born 1946)

The Angels Continue Turning the Wheels of the Universe, Part II, in which the Angel in the Red Dress . . . Plan

1978

Graphite

28 × 34 13/16 in. (71.1 × 88.4 cm)

Gift of Jean Crutchfield, Robert Hobbs, Michael W. Rabkin, and Chan B. Tom, B.A. 1977

2019.4.4



Artist: Alice Aycock (American, born 1946)

The Angels Continue Turning the Wheels of the Universe, Part II, in which the Angel in the Red Dress . . . Section

1978

Graphite

23 1/16 × 40 15/16 in. (58.5 × 104 cm)

Gift of Jean Crutchfield, Robert Hobbs, Michael W. Rabkin, and Chan B. Tom, B.A. 1977

2019.4.1



Artist: Alice Aycock (American, born 1946)

The Angels Continue Turning the Wheels of the Universe, Part II, in which the Angel in the Red Dress . . . Side Elevation

1978

Graphite

20 15/16 × 42 1/8 in. (53.2 × 107 cm)

Gift of Jean Crutchfield, Robert Hobbs, Michael W. Rabkin, and Chan B. Tom, B.A. 1977

2019.4.3



Artist: Ruth Henshaw Bascom (American, 1772–1848)

A Portrait of Elizabeth Cummings Low of Boston

1829

Watercolor, pastel, and graphite on cut paper

sight in frame: 15 11/16 × 11 1/2 in. (39.8 × 29.2 cm)

Gift of Amelia J. Zoler, B.S. 1987, M.A. 1987

2018.183.2



Artist: Pompeo Girolamo Batoni (Italian, 1708–1787)

Head of a Man, Face in Profile (recto); *Anatomical Study, Face in Profile* (verso)

18th century

Red chalk

9 5/16 × 6 3/8 in. (23.6 × 16.2 cm)

Bequest of Richard Stuart Teitz, B.A. 1963

2019.2.4



Artist, possibly by: Leonard Bramer (Dutch, 1596–1674)

The Rape of Europa

17th century

Pen and black ink and black wash

15 9/16 × 12 7/16 in. (39.6 × 31.6 cm)

Bequest of Richard Stuart Teitz, B.A. 1963

2019.2.20



Artist: Joan Brown (American, 1938–1990)

Reclining Female

ca. 1958–59

Ink, graphite, and collage

25 1/16 × 24 7/16 in. (63.7 × 62 cm) (irreg.)

Gift of The Manuel Neri Trust

2019.20.8



Artist: Joan Brown (American, 1938–1990)

Untitled

ca. 1960

Water-based pigments

24 1/16 × 28 9/16 in. (61.1 × 72.5 cm) (irreg.)

Gift of The Manuel Neri Trust

2019.20.2



Artist: Joan Brown (American, 1938–1990)

Untitled

ca. 1960

Tempera and ink

21 1/4 × 25 1/8 in. (54 × 63.8 cm) (irreg.)

Gift of The Manuel Neri Trust

2019.20.3



Artist: Joan Brown (American, 1938–1990)

Untitled

ca. 1960

Graphite

17 3/4 × 23 7/8 in. (45.1 × 60.6 cm)

Gift of The Manuel Neri Trust

2019.20.4



Artist: Joan Brown (American, 1938–1990)
Untitled
ca. 1960
Water-based pigments
24 × 24 5/16 in. (61 × 61.8 cm) (irreg.)
Gift of The Manuel Neri Trust
2019.20.5



Artist: Joan Brown (American, 1938–1990)
Untitled
ca. 1960
Water-based pigments
24 × 27 1/16 in. (61 × 68.8 cm) (irreg.)
Gift of The Manuel Neri Trust
2019.20.6



Artist: Joan Brown (American, 1938–1990)
Untitled
ca. 1960
Ink
35 1/8 × 22 11/16 in. (89.2 × 57.6 cm)
Gift of The Manuel Neri Trust
2019.20.7



Artist: Joan Brown (American, 1938–1990)
Portrait in Pink and Black
1973
Water-based pigments and graphite
14 5/8 × 12 7/16 in. (37.1 × 31.6 cm)
Gift of The Manuel Neri Trust
2019.20.13



Artist: Joan Brown (American, 1938–1990)
Model on Blue Blanket
1974
Water-based pigments and graphite
36 × 24 in. (91.4 × 61 cm)
Gift of The Manuel Neri Trust
2019.20.14



Artist: Joan Brown (American, 1938–1990)
Sherri Hart with Shoes #2
1974
Water-based pigments and graphite
36 × 24 in. (91.4 × 61 cm)
Gift of The Manuel Neri Trust
2019.20.15



Artist: Joan Brown (American, 1938–1990)

Mary Julia #13

1976

Water-based pigments and graphite

36 × 24 in. (91.4 × 61 cm)

Gift of The Manuel Neri Trust

2019.20.16



Artist: Julie Buffalohead (American and Ponca, born 1972)

Indifferent

2017

Acrylic, ink, graphite, and collaged on Lokta paper

29 7/16 × 58 3/4 in. (74.8 × 149.2 cm)

Janet and Simeon Braguin Fund

2018.155.1



Artist: Giovanni Domenico Campiglia (Italian, 1692–1775)

Statue of a Female Saint

early to mid-18th century

Black chalk

5 1/4 × 3 3/4 in. (13.3 × 9.6 cm)

Bequest of Richard Stuart Teitz, B.A. 1963

2019.2.32



Artist: Giulio Carpioni (Italian, Venice, 1613–1678)

Two Putti Carrying a Third Putto; Another Putto from the Rear

ca. 1650

Red chalk

5 1/8 × 7 1/2 in. (13 × 19.1 cm)

Bequest of Richard Stuart Teitz, B.A. 1963

2019.2.11



Artist: Agostino Carracci (Italian, 1557–1602)

Male Nude

late 16th century

Red and black chalk

10 5/16 × 6 7/16 in. (26.2 × 16.4 cm)

Bequest of Richard Stuart Teitz, B.A. 1963

2019.2.24



Artist: Cesare da Sesto (Italian, 1477–1523)

Royal Retinue

early 16th century

Charcoal and brown ink

4 3/4 × 5 1/4 in. (12.1 × 13.4 cm)

Bequest of Richard Stuart Teitz, B.A. 1963

2019.2.23



Artist, possibly by: Michel-François Dandré-Bardon (French, 1700–1783)

The Martyrdom of a Saint

mid-18th century

Pen and brown ink and brown wash over graphite and black chalk

14 13/16 × 10 7/16 in. (37.6 × 26.5 cm)

Bequest of Richard Stuart Teitz, B.A. 1963

2019.2.33



Artist: Jules Delaroche (French, 1795–1849)

Head of a Woman

early to mid-19th century

Graphite and white chalk

12 1/2 × 10 1/16 in. (31.8 × 25.6 cm)

Bequest of Richard Stuart Teitz, B.A. 1963

2019.2.15



Artist, possibly by: William Etty (British, 1787–1849)

Half-Length Male Nude

early 19th century

Black chalk and graphite

15 9/16 × 11 1/8 in. (39.6 × 28.2 cm)

Bequest of Richard Stuart Teitz, B.A. 1963

2019.2.8



Artist, possibly by: Jean-Henri Fabre (French, 1823–1915)

A Seated Classical Female Figure

late 19th century

Black chalk

10 1/4 × 12 3/8 in. (26 × 31.5 cm)

Bequest of Richard Stuart Teitz, B.A. 1963

2019.2.37



Artist: Edwin Wallace Fillmore (American, 1851–1920)

Female Nude Holding a Clover

1888

Charcoal

24 7/8 × 19 in. (63.2 × 48.3 cm)

Bequest of Richard Stuart Teitz, B.A. 1963

2019.2.22



Artist, style of: Rosso Fiorentino (Giovanni Battista di Jacopo)
(Italian, 1494–1540)

After: Donatello (Donato di Niccolò di Betto Bardi) (Italian, Florence,
1386/87–1466)

Entombment after the Pulpito della Resurrezione (Resurrection Pulpit)
early to mid-16th century

Pen and brown ink

8 9/16 × 11 5/8 in. (21.8 × 29.5 cm)

Gift of Colin T. Eisler, B.A. 1952, in memory of Charles Seymour, Jr., B.A. 1935,
Ph.D. 1938, Professor of the History of Art

2019.3.1



Artist, circle of: Henry Fuseli (Swiss, active in England, 1741–1825)

A Saint Flanked by Two Men (recto); Vulcan and Venus(?) with Putti (verso)

late 18th century

Brown ink and brown wash

6 9/16 × 3 7/8 in. (16.6 × 9.8 cm)

Bequest of Richard Stuart Teitz, B.A. 1963

2019.2.35



Artist, possibly by: Girolamo da Carpi (Italian, 1501–1556)

Studies from Antique Sculpture (recto and verso)

16th century

Pen and brown ink

9 7/16 × 7 1/4 in. (24 × 18.4 cm)

Bequest of Richard Stuart Teitz, B.A. 1963

2019.2.3



Artist: Alfred Grévin (French, 1827–1892)

Costume Study

ca. 1880–90

Black chalk and graphite

8 1/8 × 4 5/8 in. (20.6 × 11.7 cm)

Gift of John Walsh, B.A. 1961

2018.122.2



Artist: Alfred Grévin (French, 1827–1892)

Costume Study

ca. 1880–90

Black chalk

8 7/16 × 4 3/4 in. (21.4 × 12.1 cm)

Gift of John Walsh, B.A. 1961

2018.122.3



Artist, possibly by: Francesco Guardi (Italian, Venice, 1712–1793)

Two Figures in a Landscape with Ruins

mid-18th century

Brown ink and brown wash

6 3/8 × 4 5/16 in. (16.2 × 10.9 cm)

Bequest of Richard Stuart Teitz, B.A. 1963

2019.2.34



Artist: Alphonse Legros (French, 1837–1911)

Figures Removing Dead Soldiers

late 19th century

Brown and red chalk

5 3/8 × 7 5/8 in. (13.7 × 19.3 cm)

Bequest of Richard Stuart Teitz, B.A. 1963

2019.2.39



Artist: Pierre Lelu (French, 1741–1810)

The Four Evangelists

18th century

Brush and brown wash with black chalk and heightening in white gouache
each approx. 8 7/16 × 8 7/16 in. (21.5 × 21.5 cm)

Bequest of Richard Stuart Teitz, B.A. 1963

2019.2.17.1-4



Artist, possibly by: Eustache Le Sueur (French, 1616–1655)

Two Angels (recto); Male Nude (verso)

17th century

Black chalk on blue paper

8 1/2 × 11 1/8 in. (21.6 × 28.3 cm)

Bequest of Richard Stuart Teitz, B.A. 1963

2019.2.2



Artist: Sol LeWitt (American, 1928–2007)

Stripes

1991

India ink

13 5/16 × 18 1/2 in. (33.8 × 47 cm)

Gift of Suzanne Hellmuth and Jock Reynolds

2018.176.2



Artist: Sol LeWitt (American, 1928–2007)

Untitled

1991

India ink

11 1/4 × 10 7/8 in. (28.5 × 27.7 cm)

Gift of Suzanne Hellmuth and Jock Reynolds

2018.176.1



Artist, possibly by: Alessandro Maganza (Italian, 1556–1630)

Judgment of Solomon

early 17th century

Red chalk

8 5/16 × 9 13/16 in. (21.1 × 25 cm)

Bequest of Richard Stuart Teitz, B.A. 1963

2019.2.18



Artist: Kasimir Malevich (Russian, 1878–1935)

Suprematist Composition

ca. 1915–16

Graphite

8 1/4 × 5 1/4 in. (21 × 13.3 cm)

Gift of Thea Berggren, M.F.A. 1974

2019.63.1



Artist, school of: Carlo Maratti (Italian, 1625–1713)

A Female Nude and Two Studies of an Arm, One Holding a Miniature

17th century

Black chalk with heightening in white chalk on blue paper

16 1/8 × 10 3/8 in. (40.9 × 26.4 cm)

Bequest of Richard Stuart Teitz, B.A. 1963

2019.2.5



Artist: Edward Melcarth (American, 1914–1973)

Study for *Private Worlds*

1961

Ink and wash

18 1/16 × 24 in. (45.9 × 61 cm)

Gift of Kip Forbes in honor of Susan G. and John W. Jackson, B.A. 1967

2019.7.2



Artist: Edward Melcarth (American, 1914–1973)

Study for *Private Worlds*

1961

Ink and wash

14 1/16 × 16 15/16 in. (35.7 × 43 cm)

Gift of Kip Forbes in honor of Susan G. and John W. Jackson, B.A. 1967

2019.7.3



Artist: Edward Melcarth (American, 1914–1973)

Study for *Private Worlds*

1961

Ink and wash

14 1/16 × 16 15/16 in. (35.7 × 43 cm)

Gift of Kip Forbes in honor of Susan G. and John W. Jackson, B.A. 1967

2019.7.4



Artist: Edward Melcarth (American, 1914–1973)

Study for *Private Worlds*

1961

Ink and wash

18 1/16 × 24 in. (45.8 × 61 cm)

Gift of Kip Forbes in honor of Susan G. and John W. Jackson, B.A. 1967

2019.7.5



Artist: Edward Melcarth (American, 1914–1973)

Study for *Private Worlds* (recto); Study of a Head (verso)

1961

Red pencil

12 × 8 15/16 in. (30.5 × 22.7 cm)

Gift of Kip Forbes in honor of Susan G. and John W. Jackson, B.A. 1967

2019.7.6



Artist: Henry Valentine Miller (American, 1891–1980)

Abstract Landscape

1963

Watercolor on paper, mounted on board

14 × 17 13/16 in. (35.6 × 45.3 cm)

Gift of the family of Bernard Wolfe, B.A. 1935

2019.37.1



Artist: Henry Valentine Miller (American, 1891–1980)

Beach Scene

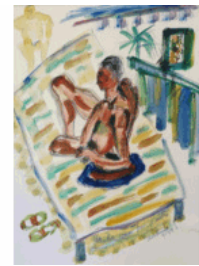
1963

Watercolor

sight in mat: 15 3/4 × 11 1/2 in. (40 × 29.2 cm)

Gift of the family of Bernard Wolfe, B.A. 1935

2019.37.2



Artist: Henry Valentine Miller (American, 1891–1980)

Geometric Watercolor

1964

Watercolor on paper, mounted on board

19 × 14 3/8 in. (48.2 × 36.5 cm)

Gift of the family of Bernard Wolfe, B.A. 1935

2019.37.3



Artist: Manuel Neri (American, born 1930)

Joan Brown with Neri Sculpture II

1963

Graphite and ink wash

23 11/16 × 17 1/16 in. (60.1 × 43.3 cm)

Gift of The Manuel Neri Trust

2019.20.10



Artist: Manuel Neri (American, born 1930)
Joan Brown with Neri Sculpture III
1963
Ink wash, acrylic, and graphite
20 1/16 × 15 3/8 in. (50.9 × 39 cm)
Gift of The Manuel Neri Trust
2019.20.11



Artist: Manuel Neri (American, born 1930)
Joan Brown with Neri Sculpture V
1963
Ink wash, acrylic, and graphite
20 × 17 1/2 in. (50.8 × 44.5 cm)
Gift of The Manuel Neri Trust
2019.20.12



Artist: Manuel Neri (American, born 1930)
Torso Studies
1963
Oil pastel, acrylic, graphite, and collage
26 1/16 × 40 1/16 in. (66.2 × 101.7 cm)
Gift of The Manuel Neri Trust
2019.20.9



Artist: Manuel Neri (American, born 1930)
She Said: Burroughs Ledger Sketchbook of Preparatory Drawings for "She Said"
Artist's Book
1991
Sketchbook with water-based pigment, oil stick, and graphite
11 1/2 × 17 13/16 × 7/8 in. (29.2 × 45.3 × 2.2 cm)
Gift of The Manuel Neri Trust
2019.20.17



Artist: Manuel Neri (American, born 1930)
She Said: Preparatory Drawing No. 1
1991
Graphite
13 × 10 13/16 in. (33 × 27.5 cm) (irreg.)
Gift of The Manuel Neri Trust
2019.20.19



Artist: Manuel Neri (American, born 1930)
She Said: Preparatory Drawing No. 2
1991
Graphite
12 3/8 × 10 9/16 in. (31.5 × 26.8 cm) (irreg.)
Gift of The Manuel Neri Trust
2019.20.20



Artist: Manuel Neri (American, born 1930)

Sketchbook Cover with Hand-Written Title

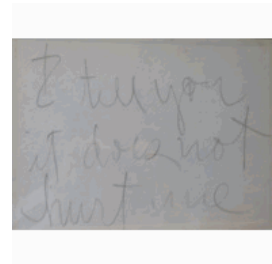
1991

Graphite on sketchbook cover

10 11/16 × 14 1/16 × 1/16 in. (27.2 × 35.7 × 0.2 cm)

Gift of The Manuel Neri Trust

2019.20.18



Artist: Giovanni Pietro Possenti (Italian, 1618–1659)

Two Putti Carrying a Third Putti (recto); *A Youth with a Staff* (verso)

mid-17th century

Pen and brown and black inks with brown wash and graphite and heightening in white gouache (recto); black chalk (verso)

11 1/16 × 7 11/16 in. (28.1 × 19.6 cm)

Bequest of Richard Stuart Teitz, B.A. 1963

2019.2.29



Artist: Maurice Prendergast (American, 1858–1924)

Gloucester

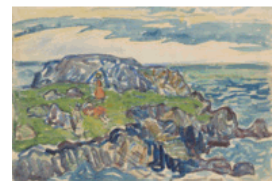
ca. 1915

Pastel and watercolor over graphite

12 × 18 in. (30.5 × 45.7 cm)

Gift of Martha and Sam Peterson in memory of Ellen M. Egger, M.A.T. 1963, and Drika Agnew Purves

2018.174.1



Artist: Alexander Rodchenko (Russian, 1891–1956)

Linear Composition

1920

Red wax crayon

13 9/16 × 8 9/16 in. (34.5 × 21.8 cm)

Gift of Thea Berggren, M.F.A. 1974

2019.63.2



Artist: George Romney (British, 1734–1802)

The Temptation of Christ

1796

Graphite

5 9/16 × 7 3/16 in. (14.2 × 18.2 cm)

Bequest of Richard Stuart Teitz, B.A. 1963

2019.2.7



Artist, possibly by: Salvator Rosa (Italian, Naples, 1615–1673)

Drawings of Classical Figures (recto and verso)

mid-17th century

Brown ink and brown wash

5 1/8 × 4 1/8 in. (13 × 10.5 cm)

Bequest of Richard Stuart Teitz, B.A. 1963

2019.2.28



After: Peter Paul Rubens (Flemish, 1577–1640)

Crowning of Mars

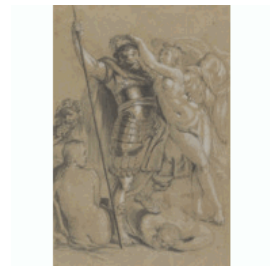
18th century

Pen and brown ink and brown wash with graphite and heightening in white gouache

13 7/16 × 9 5/8 in. (34.1 × 24.5 cm)

Bequest of Richard Stuart Teitz, B.A. 1963

2019.2.16



Artist: Edward Ruscha (American, born 1937)

Fractured Glass

2007

Acrylic on paper

12 × 9 in. (30.5 × 22.9 cm)

Gift of John Walsh, B.A. 1961, in honor of Jock Reynolds, the Henry J. Heinz II

Director, 1998–2018

2018.122.20



Artist: Leonardo Scaglia (Italian, active 1640–50)

A Fortified Town (recto); A Geometric Design (verso)

ca. 1645

Pen and brown ink and brown wash

6 5/16 × 8 5/16 in. (16.1 × 21.1 cm)

Bequest of Richard Stuart Teitz, B.A. 1963

2019.2.12



Artist: George Segal (American, 1924–2000)

Untitled Series III, #1

1963

Pastel

18 × 11 15/16 in. (45.7 × 30.3 cm)

Gift of the George and Helen Segal Foundation

2018.184.1



Artist: George Segal (American, 1924–2000)

Woman in Robe #5

1981

Pastel

18 1/16 × 12 1/16 in. (45.8 × 30.7 cm)

Gift of the George and Helen Segal Foundation

2018.184.2



Artist: George Segal (American, 1924–2000)

Untitled

1995

Pastel

24 × 18 13/16 in. (61 × 47.8 cm)

Gift of the George and Helen Segal Foundation

2018.184.3



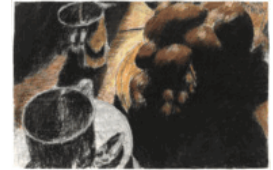
Artist: George Segal (American, 1924–2000)
Marisol II
1996
Pastel and charcoal
38 7/16 × 50 1/16 in. (97.6 × 127.1 cm)
Gift of the George and Helen Segal Foundation
2018.184.4



Artist: George Segal (American, 1924–2000)
Clasped Hands
1998–99
Pastel
38 1/4 × 50 1/16 in. (97.2 × 127.2 cm)
Gift of the George and Helen Segal Foundation
2018.184.5



Artist: George Segal (American, 1924–2000)
Untitled
1999
Pastel
25 13/16 × 40 1/8 in. (65.5 × 101.9 cm)
Gift of the George and Helen Segal Foundation
2018.184.6



Artist: Massimiliano Soldani (Italian, 1656–1740)
Bacchus
late 17th century
Brown ink and black chalk
8 1/8 × 3 11/16 in. (20.6 × 9.4 cm)
Bequest of Richard Stuart Teitz, B.A. 1963
2019.2.30



Artist: Massimiliano Soldani (Italian, 1656–1740)
Design for a Papal Medallion for the Canonization by Clement X of Saint Pius, Saint Gaetano dei Conti di Thiene, Saint Francis Borgia, S. J., Saint Louis Bertrand, O.P., and Saint Margaret Q(ueen) of Scotland
ca. 1700
Pen and brown ink over graphite
11 1/8 × 8 9/16 in. (28.3 × 21.8 cm)
Bequest of Richard Stuart Teitz, B.A. 1963
2019.2.14



Artist: Alexandre Théophile Steinlen (Swiss, 1859–1923)
Portrait Study of a Man (Yan Nibor) (recto); Loose Sketch (verso)
ca. 1900–1915
Graphite and blue crayon (recto); graphite (verso)
12 1/2 × 9 7/16 in. (31.7 × 24 cm)
Gift of John Walsh, B.A. 1961
2018.122.4



Artist: Hedda Sterne (American, born Romania, 1910–2011)

Organic Form

1970

Ink

14 5/16 × 11 9/16 in. (36.4 × 29.3 cm)

Gift of Claire A. Nivola in memory of her mother, Ruth Nivola

2019.18.2



Artist: Hedda Sterne (American, born Romania, 1910–2011)

Signs

1978

Ink

7 × 5 1/16 in. (17.8 × 12.8 cm)

Gift of Claire A. Nivola in memory of her mother, Ruth Nivola

2019.18.3



Artist, possibly by: Constant Troyon (French, 1810–1865)

Studies of Cattle

mid-19th century

Watercolor

11 1/2 × 17 1/16 in. (29.2 × 43.4 cm)

Bequest of Richard Stuart Teitz, B.A. 1963

2019.2.10



Artist: Jacques Villon (French, 1875–1963)

Madame Bertha Pfeiffer Goldfrank

1936

Graphite

sight in mat: 8 15/16 × 5 7/8 in. (22.7 × 14.9 cm)

Gift of the Stein family in memory of Beatrice Stein Steegmuller

2019.51.3



Artist: Jacques Villon (French, 1875–1963)

Mrs. G. Stein

1936

Ink and gouache

sight in mat: 6 7/16 × 4 3/8 in. (16.3 × 11.1 cm)

Gift of the Stein family in memory of Beatrice Stein Steegmuller

2019.51.2



Artist: Jacques Villon (French, 1875–1963)

Untitled

ca. 1940

Ink

sight in mat: 7 15/16 × 5 7/8 in. (20.1 × 15 cm)

Gift of the Stein family in memory of Beatrice Stein Steegmuller

2019.51.4



Artist: Lewis Vulliamy (British, 1791–1871)
Pope's Palace Taken from Northeast of Curitiba Castellana
ca. 1821
Black chalk with brown wash
7 5/16 × 11 5/8 in. (18.6 × 29.6 cm)
Bequest of Richard Stuart Teitz, B.A. 1963
2019.2.6



Artist: John Whorf (American, 1903–1950)
Storm
ca. 1941
Watercolor
15 3/8 × 21 15/16 in. (39 × 55.7 cm)
Richard Brown Baker, B.A. 1935, Collection
2019.34.1



Artist: Unknown
Design for an Elaborate Pitcher
16th century
Black chalk
14 1/2 × 10 1/4 in. (36.8 × 26 cm)
Bequest of Richard Stuart Teitz, B.A. 1963
2019.2.25



Artist: Unknown
Design for an Apse with Franciscan Friars and Groups of Angels
late 16th–early 17th century
Pen and brown ink and brown wash with heightening in white gouache on blue paper
9 3/16 × 14 13/16 in. (23.4 × 37.6 cm)
Bequest of Richard Stuart Teitz, B.A. 1963
2019.2.26



Artist: Unknown
Jesus Preaching
17th century
Black ink and gray wash
8 13/16 × 7 5/8 in. (22.4 × 19.3 cm)
Bequest of Richard Stuart Teitz, B.A. 1963
2019.2.27



Artist: Unknown
Studies of Falling Figures (recto); Studies of Figures in Draped Clothing (verso)
17th century
Pen and brown ink and brown wash with heightening in white gouache (recto); pen and brown ink and red chalk (verso)
5 11/16 × 7 5/16 in. (14.5 × 18.5 cm)
Bequest of Richard Stuart Teitz, B.A. 1963
2019.2.9



Artist: Unknown

Juno and Other Deities

late 17th–early 18th century

Gouache, watercolor, and painted shell gold

10 1/16 × 21 13/16 in. (25.5 × 55.4 cm) (irreg.)

Bequest of Richard Stuart Teitz, B.A. 1963

2019.2.31



Artist: Unknown

A Seated Woman Holding a Physiognotrace

ca. 1780

Black, white, and red chalk on blue paper

21 1/8 × 13 1/8 in. (53.7 × 33.4 cm)

Bequest of Richard Stuart Teitz, B.A. 1963

2019.2.1



Artist: Unknown

Nudes Playing Blind Man's Bluff (recto); A Procession of Demons and a Procession of Gods and Goddesses (verso)

ca. late 18th century

Pen and brown ink with graphite and black chalk (recto); pen and black ink with graphite (verso)

12 1/16 × 19 3/16 in. (30.6 × 48.8 cm)

Bequest of Richard Stuart Teitz, B.A. 1963

2019.2.36



Artist: Unknown

Maria, based on Laurence Sterne's book *A Sentimental Journey through France and Italy* (1768)

ca. 1800–1820

Watercolor

14 3/4 × 16 15/16 in. (37.5 × 43 cm)

Gift of Amelia J. Zoler, B.S. 1987, M.A. 1987

2018.183.3



Artist: Unknown

Untitled

19th century

Black and blue chalk

13 11/16 × 20 11/16 in. (34.7 × 52.5 cm)

Bequest of Richard Stuart Teitz, B.A. 1963

2019.2.19



Artist: Unknown

Bust of a Young Man in Profile with an Earring

ca. 1815

Black chalk and charcoal with heightening in white gouache

13 × 11 5/8 in. (33 × 29.5 cm)

Bequest of Richard Stuart Teitz, B.A. 1963

2019.2.13



Artist: Unknown

Pandora

mid- to late 19th century

Graphite

4 15/16 × 2 3/4 in. (12.6 × 7 cm)

Bequest of Richard Stuart Teitz, B.A. 1963

2019.2.41



Artist: Unknown

Nude Tied to a Tree

late 19th century

Brown ink and brown and blue wash

2 5/8 × 2 5/8 in. (6.7 × 6.6 cm)

Bequest of Richard Stuart Teitz, B.A. 1963

2019.2.38



Posters

Artist: Various artists

1,102 Soviet-Era posters and magazines

1909–95

Various print media

Various dimensions

The Allan Chasanoff, B.A. 1961, Russian Poster Collection, curated with Kevin

Begos

2018.136.1-.194, .200-.1107



Artist: Voces de los Artistas (American, founded 1994)

Voces de la Frontera box set

2014–18, published 2018

Box set of 58 prints and photographs in various media

Various dimensions

Richard Brown Baker, B.A. 1935, Fund

2019.14.1.1-.58



Print Matrices

Artist: Manuel Neri (American, born 1930)

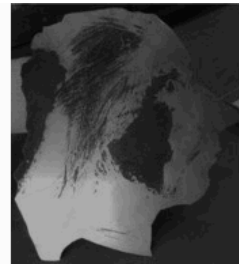
4 cancelled plates, for the portfolio *She Said: I Tell You It Doesn't Hurt Me*
1991

Aluminum etching plates

support (each approx.): 13 × 13 3/4 in. (33 × 35 cm) (irreg.)

Gift of The Manuel Neri Trust

2019.20.27, .36, .39, .43



Prints

Etcher: Pieter de Bailliu (Flemish, 1613–after 1660)

After: Rembrandt (Rembrandt van Rijn) (Dutch, 1606–1669)

Saint Anastasius

ca. 1640–56

Etching

sheet (trimmed within platemark): 11 15/16 × 9 5/8 in. (30.3 × 24.5 cm)

Gift of John Walsh, B.A. 1961

2018.122.5



Artist: Hans Bellmer (German, 1902–1975)

Printer and publisher: Editions Georges Visat (Paris, founded 1961)

Untitled, illustration for Georges Bataille's story *Madame Edwarda*

1955, published 1965

Engraving

7 3/16 × 3 3/16 in. (18.3 × 8.1 cm)

Bequest of Richard Stuart Teitz, B.A. 1963

2019.2.45



Artist: Richard Bosman (American, born India 1944)

Smokers

1982

Linoleum cut

sheet: 11 3/16 × 32 3/16 in. (28.4 × 81.7 cm)

Gift of John Walsh, B.A. 1961

2018.122.17



Artist: Louise Bourgeois (American, born France, 1911–2010)

Printer and publisher: Gravure Inc. (New York)

Sainte Sébastienne

1990

Drypoint

16 3/4 × 9 15/16 in. (42.6 × 25.2 cm)

Gift of Carol H. and Pierce R. Smith, B.S. 1966

2019.62.1



Artist: Louise Bourgeois (American, born France, 1911–2010)

Printer and publisher: Gravure Inc. (New York)

Sainte Sébastienne

1990

Drypoint with selective wiping

16 15/16 × 9 15/16 in. (43 × 25.3 cm)

Gift of Carol H. and Pierce R. Smith, B.S. 1966

2019.62.2



Artist: Louise Bourgeois (American, born France, 1911–2010)

Printer: Harlan & Weaver (New York, founded 1984)

Publisher: Peter Blum Edition (New York, founded 1980)

Stamp of Memories I

1993

Drypoint with metal stamp additions

16 15/16 × 9 15/16 in. (43 × 25.2 cm)

Gift of Carol H. and Pierce R. Smith, B.S. 1966

2019.62.3



Artist: Mannevillette Elihu Dearing Brown (American, 1810–1896)

The Gold and Silver Artificers of Philadelphia. In Civic Procession, 22 February 1832

1832

Lithograph

image: 9 1/16 × 14 9/16 in. (23 × 37 cm)

Gift of Julie and Ted Leisenring, B.A. 1949

2019.22.3



Artist: Julie Buffalohead (American and Ponca, born 1972)

Printer and publisher: Highpoint Center for Printmaking (Minneapolis, founded 2001)

Fox Tussle

2015

Lithograph

sheet: 22 11/16 × 35 3/16 in. (57.7 × 89.3 cm)

Emerson Tuttle, B.A. 1914, Print Fund

2018.154.1



Artist: Mary Cassatt (American, 1844–1926)

Printer: Eugène Delâtre (French, 1864–1938)

Knitting in the Library

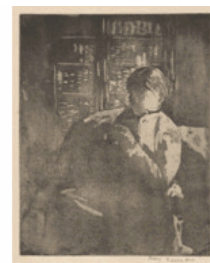
ca. 1881

Soft-ground etching and aquatint

10 7/8 × 8 9/16 in. (27.7 × 21.8 cm)

Everett V. Meeks, B.A. 1901, Fund

2018.189.1



Engraver: Charles-Nicolas Cochin the Elder (French, 1688–1754)

After: Charles-Nicolas Cochin the Younger (French, 1715–1790)

Louis de Boissy

1757

Engraving, stipple, and etching

sheet (trimmed within platemark): 5 7/8 × 3 9/16 in. (15 × 9 cm)

Gift of James Wilson, Yale Center for British Art Docent

2018.159.1



Artist: Erik Desmazières (French, born 1948)

Wunderkammer II (Cabinet of Curiosities II)

1998

Etching, aquatint, and roulette

10 9/16 × 21 3/16 in. (26.8 × 53.8 cm)

Gift of John Walsh, B.A. 1961

2018.122.18



Etcher: Anthony van Dyck (Flemish, 1599–1641)

After: Peter Paul Rubens (Flemish, 1577–1640)

Frans Francken I, from the series *Icones principum virorum* (Iconography)

1630–40

Etching

9 5/8 × 6 1/4 in. (24.5 × 15.9 cm)

Gift of John Walsh, B.A. 1961, in honor of Suzanne Boorsch, the Robert L. Solley Curator of Prints and Drawings, 2000–2018

2018.122.10



Etcher: Anthony van Dyck (Flemish, 1599–1641)

Engraver: Paulus Pontius (Flemish, 1603–1658)

Engraver: Lucas Vorsterman the Elder (Flemish, 1595–1675)

After: Anthony van Dyck (Flemish, 1599–1641)

Joannes Vanden Wouwer, from the series *Icones principum virorum* (Iconography)

1630–40

Etching and engraving

sheet (trimmed within platemark): 9 3/8 × 6 1/8 in. (23.8 × 15.5 cm)

Gift of John Walsh, B.A. 1961, in honor of Suzanne Boorsch, the Robert L. Solley Curator of Prints and Drawings, 2000–2018

2018.122.11



Etcher: Anthony van Dyck (Flemish, 1599–1641)

Engraver: Jacobus Neeffs (Flemish, 1610–1660)

Frontispiece for the series *Icones principum virorum* (Iconography)

1645

Etching and engraving

9 5/8 × 6 1/4 in. (24.4 × 15.8 cm)

Gift of John Walsh, B.A. 1961, in honor of Suzanne Boorsch, the Robert L. Solley Curator of Prints and Drawings, 2000–2018

2018.122.9



Engraver: Gérard Edelinck (Flemish, active France, 1640–1707)

After: Frans Hals (Dutch, ca. 1582/83–1666)

René Descartes chevalier seigneur du Perron

ca. 1690

Engraving

11 1/8 × 8 1/8 in. (28.3 × 20.6 cm)

Gift of James Wilson, Yale Center for British Art Docent

2018.182.1



Artist: Conrad Felixmüller (German, 1897–1977)

Kohlenbergarbeiter (Coalminers)

1921

Etching

9 15/16 × 12 5/16 in. (25.3 × 31.3 cm)

Everett V. Meeks, B.A. 1901, Fund

2018.189.4



Artist: Aaron Fink (American, born 1955, M.F.A. 1979)

Printer and publisher: Center Street Studio (Milton, Mass., founded 1984)

Perhaps, with poems by Paul Genega

1985

Portfolio of 7 etchings with aquatint, sugar lift, spit bite, and other techniques

sheet (each): 23 13/16 × 17 15/16 in. (60.5 × 45.5 cm)

Gift of the artist, M.F.A. 1979, in honor of Jock Reynolds, the Henry J. Heinz II

Director, 1998–2018

2018.147.1.1-7



Artist: Joseph Fischer (Austrian, 1769–1822)

The Personification of Painting and Music

1803

Pen lithograph

sheet: 11 5/16 × 16 5/8 in. (28.7 × 42.2 cm)

Everett V. Meeks, B.A. 1901, Fund

2019.13.1



Engraver: Giovanni Folo (Italian, 1764–1836)

After: Bénigne Gagneraux (French, 1756–1795)

Satyri celatus imagine pulchram Jupiter implevit gemino nycteida foetu, after a

ceiling fresco of 1787 in Sala XVIII, Borghese Gallery, Rome

ca. 1800

Engraving

sheet: 15 7/16 × 22 15/16 in. (39.2 × 58.2 cm)

Gift of Paul DiDomenico, M.D., and Ilke Nalbantoglu, M.D.

2019.59.3



Engraver: Simon Wijnhoutsz. Frisius (Flemish, ca. 1575–1629)

Publisher: Hendrik Hondius I (Dutch, 1573–1650)

Hendrick Cornelisz. Vroom, from the book *Pictorum aliquot celebrium, præcipuè Germaniæ inferioris, effigies* (Effigies of Some Celebrated Painters, Chiefly of Lower Germany)

1610

Etching and engraving

8 1/16 × 4 15/16 in. (20.5 × 12.5 cm)

Gift of John Walsh, B.A. 1961

2018.122.6



Artist: Heinrich Hansen (Danish, 1821–1890)

Rosenborg Castle, Copenhagen

ca. 1840

Etching

7 5/16 × 9 in. (18.5 × 22.8 cm)

Gift of John Walsh, B.A. 1961

2018.122.13



Engraver: François Huot (French, born ca. 1782, active 1803)

After: André Pujos (French, 1738–1788)

Antoine Court de Gébelin

1784

Engraving and etching

8 11/16 × 6 in. (22.1 × 15.3 cm)

Gift of James Wilson, Yale Center for British Art Docent

2018.159.13



Artist: Norman Ives (American, 1923–1978, B.F.A. 1951, M.F.A. 1952)

PC-I

1974

Screenprint

screen: 24 1/8 × 24 1/8 in. (61.2 × 61.2 cm)

Gift of Thea Berggren, M.F.A. 1974

2019.39.2



Woodcutter: Christoffel Jegher (Flemish, baptized 1596–1652/53)

After: Peter Paul Rubens (Flemish, 1577–1640)

The Coronation of the Virgin

1633

Woodcut

block: 13 7/16 × 17 3/8 in. (34.2 × 44.2 cm)

Gift of John Walsh, B.A. 1961, in honor of Suzanne Boorsch, the Robert L. Solley Curator of Prints and Drawings, 2000–2018

2018.122.7



Woodcutter: Christoffel Jegher (Flemish, baptized 1596–1652/53)

After: Peter Paul Rubens (Flemish, 1577–1640)

The March of Silenus

ca. 1652

Woodcut

block: 16 7/16 × 13 3/8 in. (41.8 × 34 cm)

Gift of John Walsh, B.A. 1961, in honor of Suzanne Boorsch, the Robert L. Solley
Curator of Prints and Drawings, 2000–2018

2018.122.8



Artist: Jasper Johns (American, born 1930)

Printer and publisher: Universal Limited Art Editions (Bay Shore, N.Y.,
founded 1957)

Viola

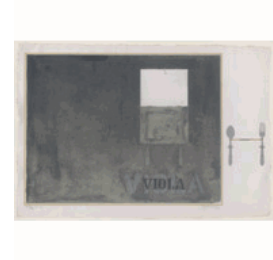
1972

Color lithograph

image: 25 5/8 × 40 1/2 in. (65.1 × 102.9 cm)

Gift of Barbara Bertozzi Castelli

2018.164.1



Artist: Jasper Johns (American, born 1930)

Printer and publisher: Universal Limited Art Editions (Bay Shore, N.Y.,
founded 1957)

Ventriloquist

1985

Color lithograph

image: 33 1/2 × 22 1/4 in. (85.1 × 56.5 cm)

Gift of Barbara Bertozzi Castelli

2018.164.2



Artist: Jasper Johns (American, born 1930)

Printer and publisher: Universal Limited Art Editions (Bay Shore, N.Y.,
founded 1957)

Ventriloquist

1986

Color lithograph

image: 36 7/16 × 24 1/4 in. (92.5 × 61.6 cm)

Gift of Barbara Bertozzi Castelli

2018.164.3



Artist: Jasper Johns (American, born 1930)

Printer and publisher: Universal Limited Art Editions (Bay Shore, N.Y.,
founded 1957)

Untitled

1992

Color etching and aquatint

image: 35 5/8 × 45 3/8 in. (90.5 × 115.3 cm)

Gift of Barbara Bertozzi Castelli

2018.164.4



Artist: Jasper Johns (American, born 1930)
Printer and publisher: Universal Limited Art Editions (Bay Shore, N.Y.,
founded 1957)
After Holbein
1993
Color lithograph
image: 16 1/8 × 13 1/8 in. (40.9 × 33.3 cm)
Gift of Barbara Bertozzi Castelli
2018.164.5



Artist: Jasper Johns (American, born 1930)
Printer and publisher: Universal Limited Art Editions (Bay Shore, N.Y.,
founded 1957)
After Holbein
1993
Color lithograph
image: 15 15/16 × 15 7/8 in. (40.5 × 40.3 cm)
Gift of Barbara Bertozzi Castelli
2018.164.6



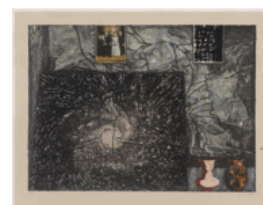
Artist: Jasper Johns (American, born 1930)
Printer and publisher: Universal Limited Art Editions (Bay Shore, N.Y.,
founded 1957)
After Holbein
1994
Color lithograph
sheet: 32 1/4 × 25 3/16 in. (81.9 × 64 cm)
Gift of Barbara Bertozzi Castelli
2018.164.7



Artist: Jasper Johns (American, born 1930)
Printer and publisher: Universal Limited Art Editions (Bay Shore, N.Y.,
founded 1957)
Untitled (American Center)
1994
Color lithograph
image: 29 1/2 × 24 1/2 in. (74.9 × 62.2 cm)
Gift of Barbara Bertozzi Castelli
2018.164.8



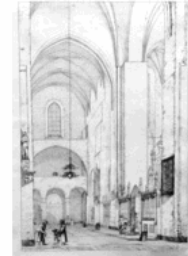
Artist: Jasper Johns (American, born 1930)
Printer and publisher: Universal Limited Art Editions (Bay Shore, N.Y.,
founded 1957)
Untitled
1995
Color lithograph
image: 34 3/4 × 47 5/8 in. (88.3 × 121 cm)
Gift of Barbara Bertozzi Castelli
2018.164.9



Artist: Jasper Johns (American, born 1930)
Printer and publisher: Universal Limited Art Editions (Bay Shore, N.Y.,
founded 1957)
Untitled
1997
Etching and aquatint
12 9/16 × 19 1/4 in. (31.9 × 48.9 cm)
Gift of Barbara Bertozzi Castelli
2018.164.10



Etcher: Christen Købke (Danish, 1810–1848)
Interior of Aarhus Cathedral
ca. 1831
Etching
12 13/16 × 9 5/16 in. (32.6 × 23.6 cm)
Gift of John Walsh, B.A. 1961
2018.122.16



Artist: Käthe Kollwitz (German, 1867–1945)
Printer: Otto Felsing (German, ac. 1900s)
Weberzug (March of the Weavers), from *Ein Weberaufstand* (A Weavers' Revolt)
1893–97
Etching
8 7/16 × 11 5/8 in. (21.5 × 29.5 cm)
Everett V. Meeks, B.A. 1901, Fund
2018.189.2



Artist: Jean-Emile Laboureur (French, 1877–1943)
Le Bal Bullier
1898
Woodcut
block: 9 × 11 3/8 in. (22.8 × 28.9 cm)
Everett V. Meeks, B.A. 1901, Fund
2018.189.3



Artist: Julian Lethbridge (American, born Sri Lanka 1947)
Printer and publisher: Universal Limited Art Editions (Bay Shore, N.Y.,
founded 1957)
Melrose Beach #1
2002
Lithograph
Stone: 22 11/16 × 21 in. (57.7 × 53.3 cm)
Gift of Craig and Elizabeth Zammiello
2018.175.1.1



Artist: Julian Lethbridge (American, born Sri Lanka 1947)
Printer and publisher: Universal Limited Art Editions (Bay Shore, N.Y.,
founded 1957)

Melrose Beach #2

2002

Lithograph

stone: 22 1/2 × 20 15/16 in. (57.1 × 53.2 cm)

Gift of Craig and Elizabeth Zammiello

2018.175.1.2

Artist: Julian Lethbridge (American, born Sri Lanka 1947)

Printer and publisher: Universal Limited Art Editions (Bay Shore, N.Y.,
founded 1957)

Melrose Beach #3

2002

Lithograph

stone: 22 11/16 × 20 15/16 in. (57.6 × 53.2 cm)

Gift of Craig and Elizabeth Zammiello

2018.175.1.3

Artist: Julian Lethbridge (American, born Sri Lanka 1947)

Printer and publisher: Universal Limited Art Editions (Bay Shore, N.Y.,
founded 1957)

Melrose Beach #4

2002

Lithograph

stone: 22 5/8 × 20 13/16 in. (57.5 × 52.9 cm)

Gift of Craig and Elizabeth Zammiello

2018.175.1.4

Artist: Julian Lethbridge (American, born Sri Lanka 1947)

Printer and publisher: Universal Limited Art Editions (Bay Shore, N.Y.,
founded 1957)

Melrose Beach #5

2002

Lithograph

stone: 22 11/16 × 20 15/16 in. (57.6 × 53.2 cm)

Gift of Craig and Elizabeth Zammiello

2018.175.1.5

Artist: Roy Lichtenstein (American, 1923–1997)

Printer: Ives-Sillman, Inc. (New Haven, Conn., 1966–92)

Salute to Aviation

1968

Screenprint

screen: 42 15/16 × 21 5/8 in. (109 × 54.9 cm)

Transfer from the Museum of Art, Rhode Island School of Design from the bequest
of Richard Brown Baker, B.A. 1935

2019.35.1



Artist, copy after: Henri Matisse (French, 1869–1954)
Copy of *Tête de jeune femme au collier en feston* (Head of a Young Woman with a Festoon Necklace), in reverse
after 1946
Etching
8 15/16 × 5 7/8 in. (22.7 × 14.9 cm)
Bequest of Richard Stuart Teitz, B.A. 1963
2019.2.46



Artist, copy after: Henri Matisse (French, 1869–1954)
Copy of *Tête de jeune femme au collier en feston* (Head of a Young Woman with a Festoon Necklace), in reverse
after 1946
Etching
9 × 6 in. (22.9 × 15.2 cm)
Bequest of Richard Stuart Teitz, B.A. 1963
2019.2.47



Engraver: Simon Charles Miger (French, 1736–1820)
After: Jean-François Colson (French, 1733–1803)
Giovanni Niccolò Servandoni
1771
Engraving and etching
10 1/2 × 7 3/8 in. (26.7 × 18.8 cm)
Gift of James Wilson, Yale Center for British Art Docent
2018.159.12



Engraver: Raphael Morghen (Italian, 1758–1833)
After: Guido Reni (Italian, Bologna, 1575–1642)
Publisher: Giovanni Volpato (Italian, 1740–1803)
Quadrijugis invectus equis sol aureus exit (The Golden Sun Leaves Driven by a Team of Four Horses), after a ceiling fresco of 1614 in the Casino dell'Aurora, allavicini-Rospigliosi, Rome
1787
Engraving
sheet: 20 1/8 × 35 7/8 in. (51.1 × 91.2 cm)
Gift of Paul DiDomenico, M.D., and Ilke Nalbantoglu, M.D.
2019.59.2



Engraver: Raphael Morghen (Italian, 1758–1833)
After: Angelica Kauffmann (Swiss, 1741–1807)
The Family of Princess Bariatinski
1793–94
Engraving
25 3/4 × 16 1/2 in. (65.4 × 41.9 cm)
Gift of Paul DiDomenico, M.D., and Ilke Nalbantoglu, M.D.
2019.59.1



Artist: Manuel Neri (American, born 1930)

Printer and publisher: Brighton Press (San Diego, founded 1985)

Title page and introduction and 18 proof prints, from the portfolio *She Said: I Tell You It Doesn't Hurt Me*, 8 with poems by Mary Julia Klimenko

1991

Etching and aquatints, 17 with colored ink wash, 1 cut and ripped to platemark, 1 with pen and ink, and 8 with letterpress text

each approx. 13 3/4 × 13 3/4 in. (35 × 35 cm) (irreg.)

Gift of The Manuel Neri Trust

2019.20.21.-.26, .28-35, .37-.38, .40-.42



Artist: Maxime Préaud (French, born 1945)

Treize caprices macabres (Thirteen Macabre Caprices)

1982–83

Suite of 13 etchings, some with aquatint

each 7 × 5 1/16 in. (17.8 × 12.9 cm)

Gift of Allan Appel and Suzanne Boorsch in memory of Mary Louise Boorsch

2019.58.1.1-.13



Artist: Jørgen Roed (Danish, 1808–1888)

Roeskilde Cathedral

1849

Etching

12 1/16 × 12 3/8 in. (30.7 × 31.4 cm)

Gift of John Walsh, B.A. 1961

2018.122.14



Artist: Félicien Rops (Belgian, 1833–1898)

Cabotinages de femmes (also known as *Les cabotinages de l'amour* or *Woman on a Rocking Horse*)

1896

Colored heliogravure with stipple and remarques

7 5/16 × 5 3/8 in. (18.5 × 13.6 cm)

Bequest of Richard Stuart Teitz, B.A. 1963

2019.2.44



Etcher: Martinus Rørbye (Danish, 1803–1848)

On the Beach at Thisted

1830

Etching

8 9/16 × 10 in. (21.7 × 25.4 cm)

Gift of John Walsh, B.A. 1961

2018.122.15



Artist: Ernest David Roth (American, born Germany, 1879–1967)

Gothic Portal

1913

Etching

12 × 7 15/16 in. (30.5 × 20.2 cm)

Gift of John Walsh, B.A. 1961

2018.122.19



Etcher: Alexander Runciman (Scottish, 1736–1785)

Agrippina Mourning over the Ashes of Germanicus

ca. 1773

Etching

sheet (trimmed within platemark): 5 3/8 × 4 1/8 in. (13.6 × 10.5 cm)

Gift of Colin T. Eisler, B.A. 1952

2018.139.1



Etcher: Alexander Runciman (Scottish, 1736–1785)

Fingal Encounters Carbon Carglass (upright version)

ca. 1773

Etching

sheet (trimmed within platemark): 5 1/2 × 3 1/4 in. (14 × 8.3 cm)

Gift of Colin T. Eisler, B.A. 1952

2018.139.2



Engraver: Jan Saenredam (Dutch, 1565–1607)

After: Hendrick Goltzius (Dutch, 1558–1617)

Marriage for Wealth Officiated by Satan, from the series *Three Kinds of Marriages*

ca. 1595

Engraving

sheet (trimmed within platemark): 9 × 6 5/16 in. (22.9 × 16 cm)

Bequest of Richard Stuart Teitz, B.A. 1963

2019.2.43



Engraver: Augustin de Saint-Aubin (French, 1736–1807)

After: Charles-Nicolas Cochin the Younger (French, 1715–1790)

Jean Monnet

1765

Engraving, stipple, and etching

sheet (trimmed within platemark): 7 5/16 × 4 7/8 in. (18.5 × 12.4 cm)

Gift of James Wilson, Yale Center for British Art Docent

2018.159.2



Engraver: Augustin de Saint-Aubin (French, 1736–1807)

After: Dominique Vivant Denon (French, 1747–1825)

Claude-Joseph Dorat

1767

Engraving, stipple, and etching

sheet (trimmed within platemark): 7 1/8 × 4 11/16 in. (18.1 × 11.9 cm)

Gift of James Wilson, Yale Center for British Art Docent

2018.159.3



Engraver: Augustin de Saint-Aubin (French, 1736–1807)

After: Charles-Nicolas Cochin the Younger (French, 1715–1790)

Salvator Franciscus Morand

1768

Engraving, stipple, and etching

sheet (trimmed within platemark): 7 × 5 in. (17.8 × 12.7 cm)

Gift of James Wilson, Yale Center for British Art Docent

2018.159.4



Engraver: Augustin de Saint-Aubin (French, 1736–1807)

After: Charles-Nicolas Cochin the Elder (French, 1688–1754)

Antoine de Parcieux

1771

Engraving, stipple, and etching

sheet (trimmed within platemark): 7 1/16 × 5 1/16 in. (17.9 × 12.8 cm)

Gift of James Wilson, Yale Center for British Art Docent

2018.159.5



Engraver: Augustin de Saint-Aubin (French, 1736–1807)

Bernard de Fontenelle

1794

Engraving, stipple, and etching

6 1/4 × 4 1/16 in. (15.8 × 10.3 cm)

Gift of James Wilson, Yale Center for British Art Docent

2018.159.6



Engraver: Augustin de Saint-Aubin (French, 1736–1807)

Charles-Denis de Saint Evremond

1795

Engraving, stipple, and etching

7 1/2 × 5 1/16 in. (19 × 12.8 cm)

Gift of James Wilson, Yale Center for British Art Docent

2018.159.7



Engraver: Augustin de Saint-Aubin (French, 1736–1807)
After: Elisabeth Sophie Chéron (French, 1648–1711)
Antoinette du Ligier de La Garde Deshoulières
1803
Engraving, stipple, and etching
7 1/8 × 4 3/8 in. (18.1 × 11.1 cm)
Gift of James Wilson, Yale Center for British Art Docent
2018.159.8



Engraver: Augustin de Saint-Aubin (French, 1736–1807)
After: Jean-Marc Nattier (French, 1685–1766)
Jean-Baptiste-Louis Gresset
1803
Engraving, stipple, and etching
sheet (trimmed within platemark): 5 7/16 × 3 7/16 in. (13.8 × 8.8 cm)
Gift of James Wilson, Yale Center for British Art Docent
2018.159.9



Engraver: Augustin de Saint-Aubin (French, 1736–1807)
After: Nicholas-André Monsiaux (French, 1754–1837)
Duc de La Rochefoucauld
1804
Engraving, stipple, and etching
7 × 4 1/2 in. (17.8 × 11.5 cm)
Gift of James Wilson, Yale Center for British Art Docent
2018.159.10



Engraver: Augustin de Saint-Aubin (French, 1736–1807)
Alain-René Le Sage
1806
Engraving, stipple, and etching
6 7/16 × 4 1/2 in. (16.4 × 11.5 cm)
Gift of James Wilson, Yale Center for British Art Docent
2018.159.11



Artist: Kurt Seligmann (American, born Switzerland, 1900–1962)
The Beggars
ca. 1941
Etching
9 13/16 × 7 3/8 in. (24.9 × 18.7 cm)
Emerson Tuttle, B.A. 1914, Fund
2019.17.1



Artist: Honoré Sharrer (American, 1920–2009)

Man / Woman / Dog / Moon

1986

8 etchings, some with hand additions

each approx. $5 \frac{3}{4} \times 8 \frac{15}{16}$ in. (14.6 × 22.7 cm)

Gift from the collection of Adam Zagorin and the late Perez Zagorin

2019.32.1-.8



Etcher: Nikolaus Solis (German, ca. 1542–1584)

An Officer, from a series of etchings of soldiers

ca. 1568

Etching

sheet (trimmed within platemark): $3 \frac{7}{16} \times 2 \frac{1}{16}$ in. (8.8 × 5.3 cm)

Bequest of Richard Stuart Teitz, B.A. 1963

2019.2.42



Artist: Victor Vasarely (French, born Hungary, 1906-1997)

Bora II

1965

Screenprint

screen: $8 \frac{1}{2} \times 7 \frac{5}{8}$ in. (21.6 × 19.4 cm)

Richard Brown Baker, B.A. 1935, Collection

2008.19.1280



Printmaker: Nicolaas Verkolje (Dutch, 1673–1746)

Zwei spielende Hunde (Two Dogs Playing)

ca. 1700

Mezzotint

$3 \frac{7}{16} \times 5 \frac{11}{16}$ in. (8.7 × 14.4 cm)

Everett V. Meeks, B.A. 1901, Fund

2019.15.1



Artist: Jacques Villon (French, 1875–1963)

L'usine (The Factory)

1935

Etching

$8 \frac{5}{16} \times 10 \frac{11}{16}$ in. (21.1 × 27.2 cm)

Gift of the Stein family in memory of Beatrice Stein Steegmuller

2019.51.5



Artist: Jacques Villon (French, 1875–1963)

Madame Steegmuller

1935

Etching

$10 \frac{9}{16} \times 8 \frac{1}{4}$ in. (26.9 × 21 cm)

Gift of the Stein family in memory of Beatrice Stein Steegmuller

2019.51.1



Artist: Jacques Villon (French, 1875–1963)

Heureuse année (Happy New Year)

1956

Lithograph

stone: 4 1/16 × 6 3/4 in. (10.3 × 17.1 cm)

Gift of the Stein family in memory of Beatrice Stein Steegmuller

2019.51.6



Engraver: Lucas Vorsterman the Elder (Flemish, 1595–1675)

After: Anthony van Dyck (Flemish, 1599–1641)

Publisher: Maarten van den Enden (Flemish, 1605–1673)

Theodorus Galle, from the series *Icones principum virorum* (Iconography)

1630–40

Etching and engraving

9 7/16 × 6 3/16 in. (23.9 × 15.7 cm)

Gift of John Walsh, B.A. 1961, in honor of Suzanne Boorsch, the Robert L. Solley

Curator of Prints and Drawings, 2000–2018

2018.122.12

