

GUIDE FOR FAMILIES

**GET
ST
ART
ED**

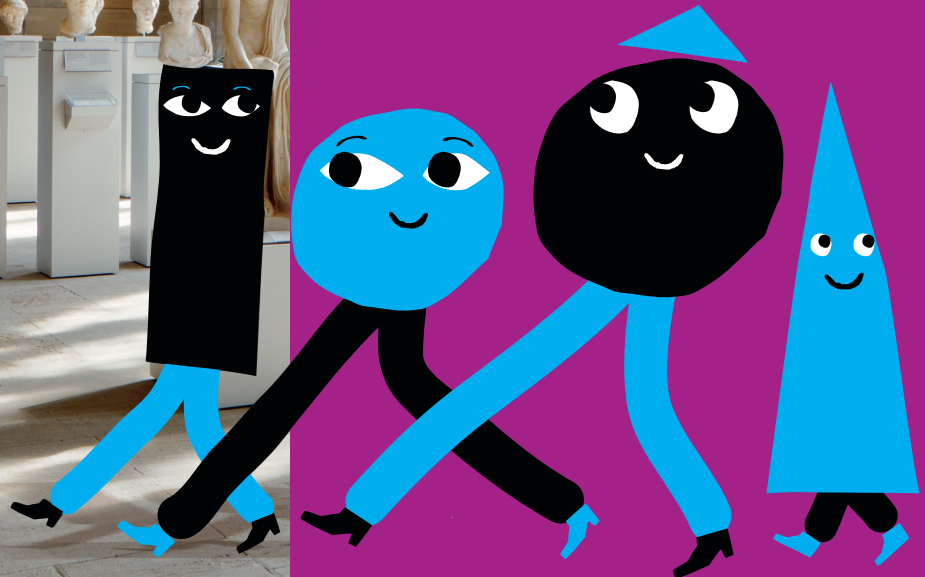
YALE UNIVERSITY ART GALLERY

Welcome to the Yale University Art Gallery!

This museum displays works of art from many cultures and time periods.

We encourage you and your child to explore on your own, using the ideas in this guide or the other family-friendly materials available at the Information Desk in the lobby.

The Gallery's family guides are designed to help you look more closely at art and enjoy your time in the museum. You can also join us for our free family programs.



Tips for Your Visit

Try not to see too much in one visit. Depending on your child's age, aim for thirty to ninety minutes—and remember to take breaks.

Please look closely but do not touch any of the artworks. Hold your child's hand if he or she is tempted to touch. We often invite younger visitors to adopt the "museum pose," in which they keep their hands in their pockets, or clasped in front of them or behind their backs.

Backpacks and large bags must be left in the lockers available in the lobby or the lower lobby.

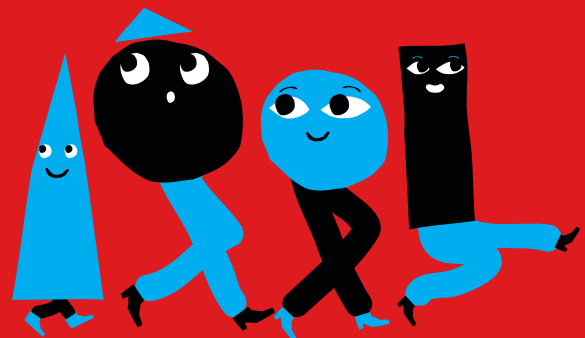
Baby strollers are allowed in the galleries. To borrow a stroller, please inquire at the Information Desk.

Be sure to visit the Information Desk to pick up drawing materials and activity guides, and to find out about family-friendly programs.

You may take photographs of most of the collection as long as you do not use the flash. Please check with a security guard or at the Information Desk if you have any questions.

Information about the works on view is available on wall labels. To learn more about specific objects, please visit our website artgallery.yale.edu, stop by the Nolen Center Library, or take a free gallery tour.

Come to the Nolen Center Library on the lower level of the East Galleries to find books for both kids and adults. See the General Information page of this guide for hours.

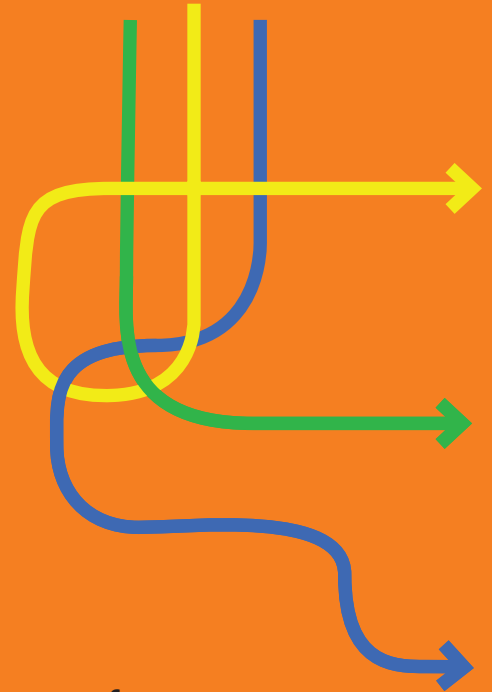


Ways to Look Together



We encourage families to explore art through conversation and activities.

Here are some of our favorite ways of doing this.



Feel free to focus on just one object, or design a theme, such as people, places, or things, to connect a number of artworks.

Questions to Ask While Looking at Works of Art

Start with broad questions such as:

What do you see?
What do you notice?

Look for stories and ask:

What is happening?
What is going on?

Look at details and ask:

What colors are used?
What does the texture look like?
What materials did the artist use?

Look at the same piece from different positions:

Does anything change for you?
What new things do you see when you look again?





Things to Do

Draw and write.

You may pick up pencils and paper at the Information Desk. Ask your child to write about what he or she notices in the art, or draw the story that might go with the art. Ask them to draw what they see.

Strike a pose.

Explore body language in painting and sculpture and try to re-create what you see with your own body.

Don't forget the buildings!

Look at the shapes and materials of the buildings. Do you notice different shapes and materials as you explore the museum? What do you see from the windows?

Check out our self-guided activities for families.

Ask at the Information Desk.

Ongoing Programs

Stories and Art

On the second Sunday of each month, the Gallery offers Stories and Art, with tales of distant times and faraway lands that inspire children of all ages to view art in new ways. Drawing materials are available for older children. Check online or at the Information Desk for the next scheduled date.

Family Day

Each year, the Gallery hosts a special Family Day. This event invites families to explore the galleries together through tours, storytelling, and art-making activities. Enjoy the collections, learn more about art, and have fun together.

Activity Guides

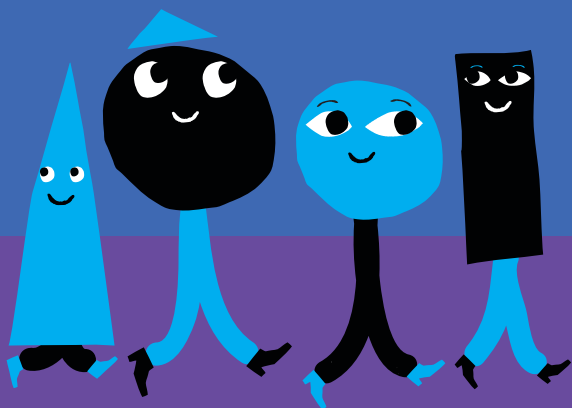
These self-guided activities engage families in close looking and conversation about the museum and art. Materials are available at the Information Desk.

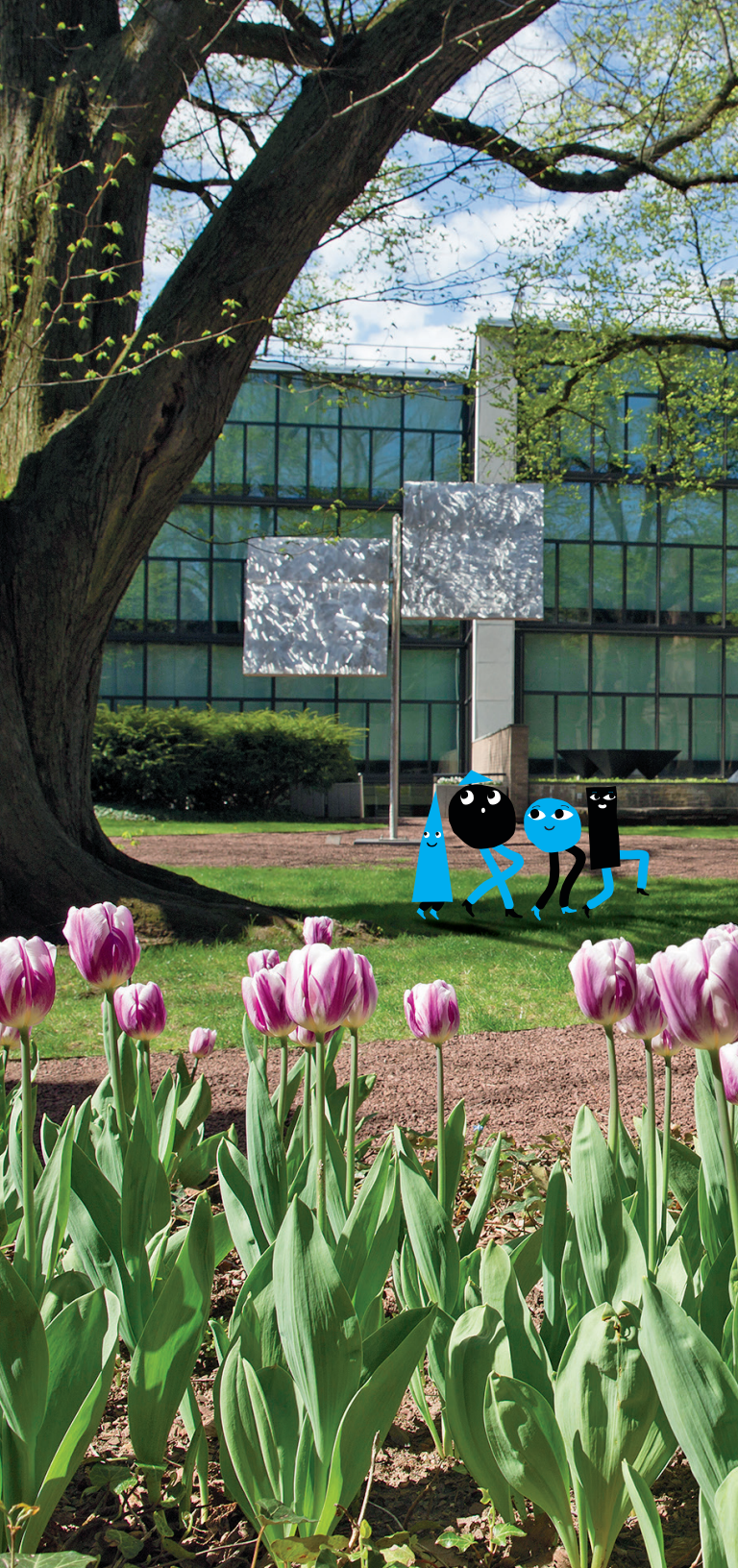
Weekend Tours

Families are invited to attend our scheduled Highlights and Angles on Art tours, offered free to the public. Given by Yale students, these tours are interactive and fun, and provide student perspectives on the collection.

Group and Special-Request Tours

Most family programs are also available by request for groups. Programs may also be available in Spanish and other languages. Please fill out a registration form at artgallery.yale.edu/groups to schedule your group visit.





Yale University Art Gallery

1111 Chapel Street

New Haven, CT 06510

artgallery.yale.edu

General Information

203.432.0600

Group and School Tours

203.436.8831

Gallery Hours

Tuesday through Friday:

10:00 am to 5:00 pm

Thursday until 8:00 pm (Sept.–June)

Saturday and Sunday:

11:00 am to 5:00 pm

Closed Mondays and major holidays

Nolen Center Library Hours

Tuesday through Friday:

1:00 to 4:30 pm

Thursday until 7:30 pm (Sept.–June)

*Please check the Gallery's website
for summer hours (May–Aug.)*

Family programs at the Yale University Art Gallery are supported in part by: Mr. and Mrs. Wilson Nolen, B.A. 1948; Ms. Eliot Nolen, B.A. 1984, and Mr. Timothy P. Bradley, B.A. 1983; Christian Nolen, B.A. 1982; Malcolm Nolen, B.A. 1983; Director's Resource Endowment Fund; Education and Outreach Fund; Alva Gimbel Greenberg Family Fund; Carol and Sol LeWitt Fund for Education; Frederick and Jan Mayer Education Curatorship Fund; Vincent Scully Fund for Education; Seedlings Foundation Public Education Fund; Margaret and Angus Wurtele, B.A. 1956, Fund for Education; and Yale University Art Gallery Fund for Education.

YALE
UNIVERSITY
ART
GALLERY